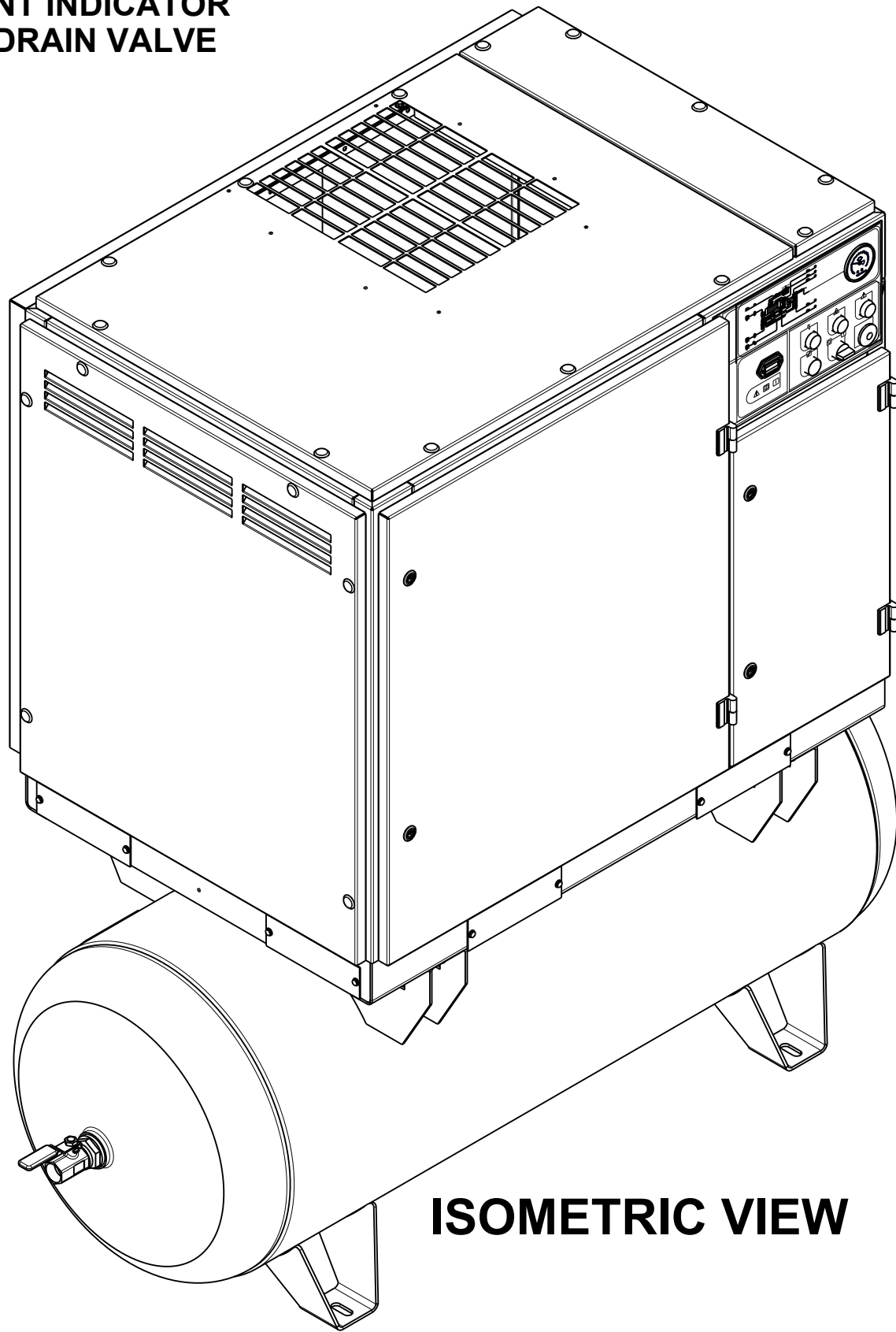


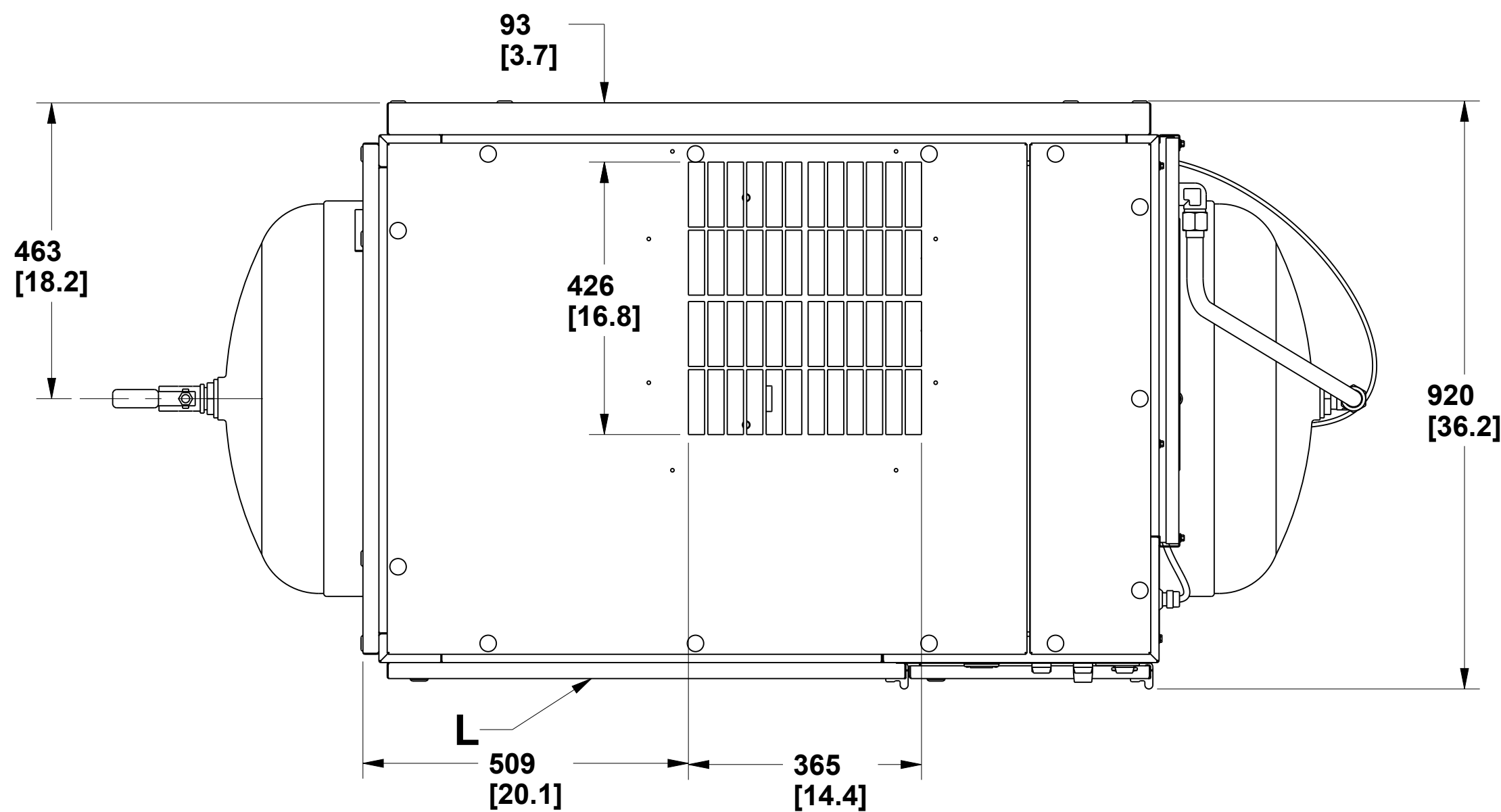
- NOTES:
1. APPROXIMATE STANDARD PACKAGE WEIGHTS:
- 15HP - 642 Kg (1415 lbs.)
20 HP - 685 Kg (1510 lbs.)
25 HP - 694 Kg (1530 lbs.)
30 HP - 733 Kg (1616 lbs.)
- APPROXIMATE DRYER PACKAGE WEIGHTS:
- 15HP - 744 Kg (1640 lbs.)
20 HP - 787 Kg (1735 lbs.)
25 HP - 805 Kg (1775 lbs.)
30 HP - 844 Kg (1861 lbs.)
2. COOLANT (LUBRICANT) FILL QUANTITY (APPROXIMATE) 13 LITERS (3.4 GALLONS)
3. RECOMMENDED CLEARANCE IN FRONT OF CONTROL PANEL DOOR 1067mm (42 inches) OR MINIMUM AS REQUIRED BY THE LATEST NATIONAL ELECTRICAL CODES OR APPLICABLE LOCAL CODES.
4. RECOMMENDED CLEARANCES ON TWO SIDES (LEFT AND RIGHT SIDE) 914mm (36 inches).
5. MINIMUM RECOMMENDED CLEARANCE FOR THE REAR OF THE COMPRESSOR IS TO BE 152mm (6 inches).
6. MINIMUM RECOMMENDED COMPRESSOR TOP CLEARANCE FOR PACKAGE EXHAUST TO BE 914 mm (36 INCHES).
7. EXTERNAL PIPING SHALL NOT EXERT ANY UNRESOLVED MOMENTS OR FORCES ON THE UNIT. USE PIPE SIZE AS LARGE OR LARGER AT DISCHARGE CONNECTION.
8. THERE SHOULD BE NO PLASTIC OR PVC PIPING ATTACHED TO THIS UNIT OR USED FOR ANY LINES DOWN STREAM.
9. ANY FIELD INSTALLED DUCTING TO AND FROM THE COMPRESSOR CANNOT ADD MORE THAN 12.7mm (0.5 INCHES) OF WATER TOTAL AIR RESISTANCE.
10. DO NOT PIPE INTO A COMMON HEADER WITH A RECIPROCATING COMPRESSOR, UNLESS THE RECIPROCATING COMPRESSOR UTILIZES A DISCHARGE PULSATION DAMPENER.
11. SIZING OF ELECTRICAL COMPONENTS NOT SUPPLIED BY INGERSOLL-RAND IS THE RESPONSIBILITY OF THE CUSTOMER AND SHOULD BE DONE IN ACCORDANCE WITH THE INFORMATION ON THE COMPRESSOR DATA PLATE AND NATIONAL AND LOCAL ELECTRICAL CODES.

KEY

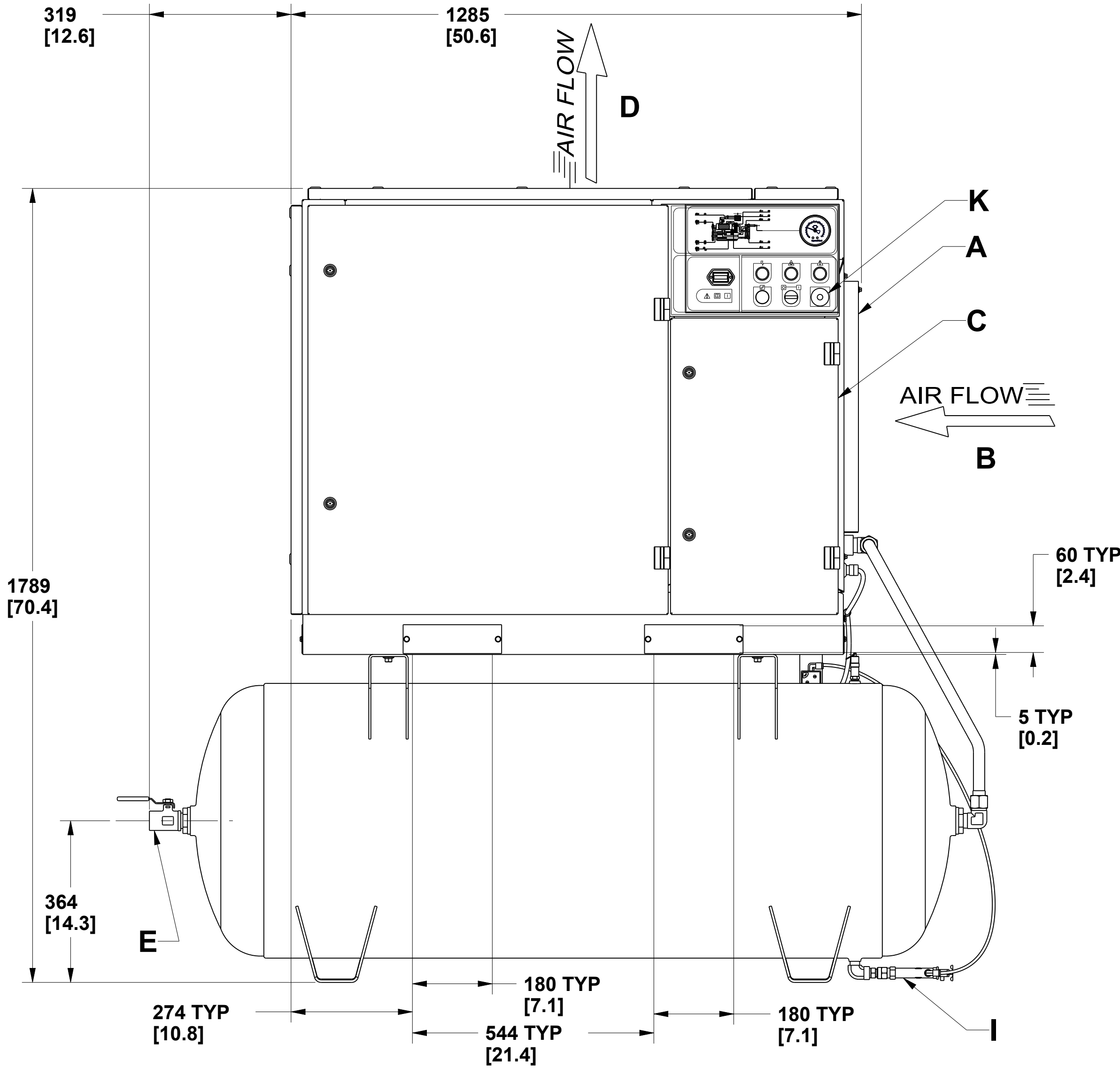
- A PRE FILTER
B COMPRESSOR AIR INTAKE
C STARTER BOX (NON COMBINATION STARTER)
D COOLING AIR EXHAUST
E 1.00 INCH NPT AIR DISCHARGE
F CUSTOMER POWER INLET
G FORK LIFT OPENINGS
H AIR RECEIVER (120 GALLONS)
I AUTOMATIC DRAIN VALVE
J .25 INCH NPT CONDENSATE DRAIN
K EMERGENCY STOP BUTTON
L PRIMARY COMPRESSOR SERVICE DOOR
M INSPECTION PORT
N DRYER AIR INLET
O DRYER AIR EXHAUST
P .25 INCH NPT MOISTURE SEPARATOR DRAIN
Q .25 INCH NPT DRYER DRAIN
R .25 INCH NPT AIR FILTER DRAIN
S 1.00 INCH NPT PLUG
T DRYER ON/OFF SWITCH
W DEW POINT INDICATOR
X MANUAL DRAIN VALVE



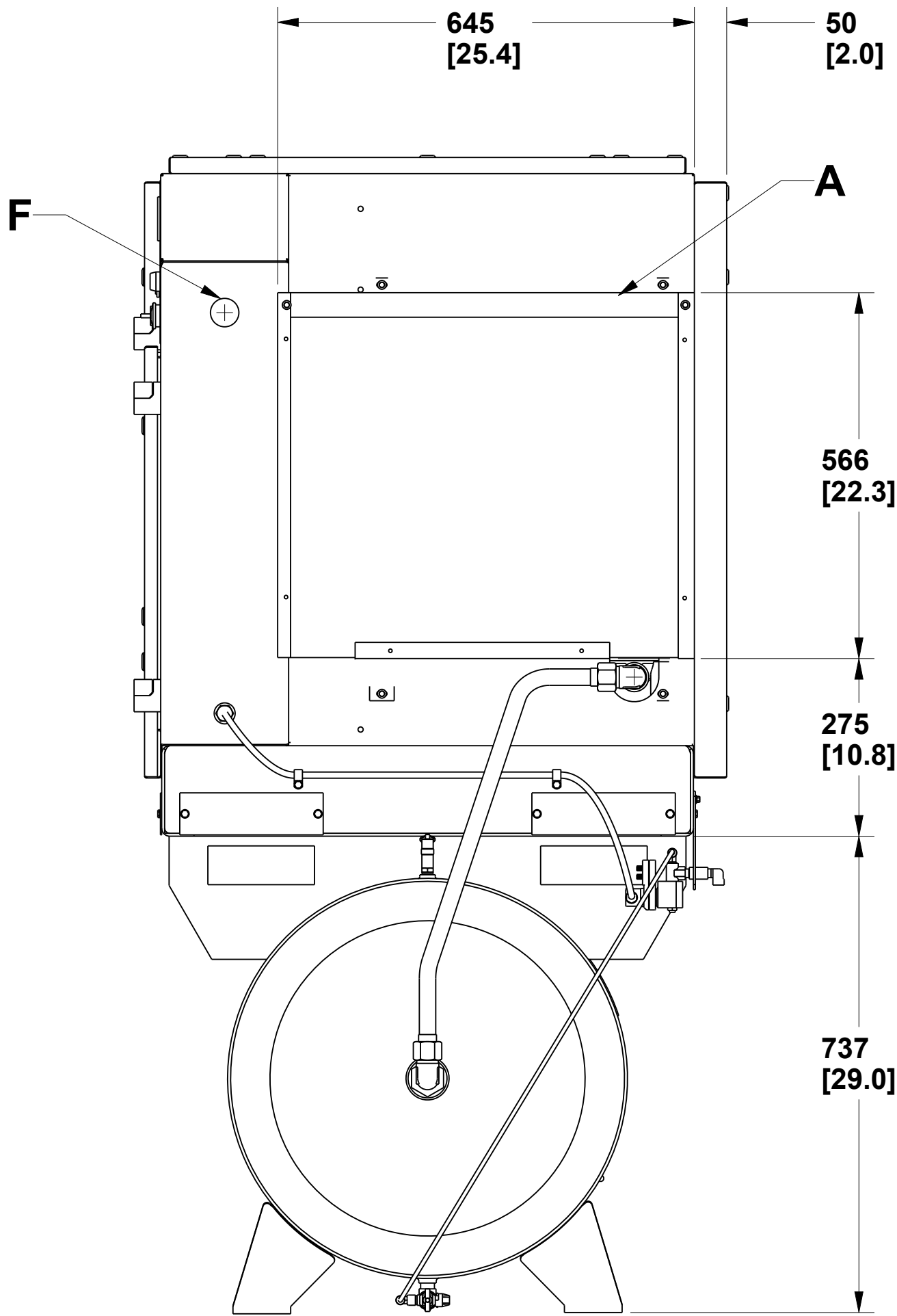
ISOMETRIC VIEW





TOP VIEW

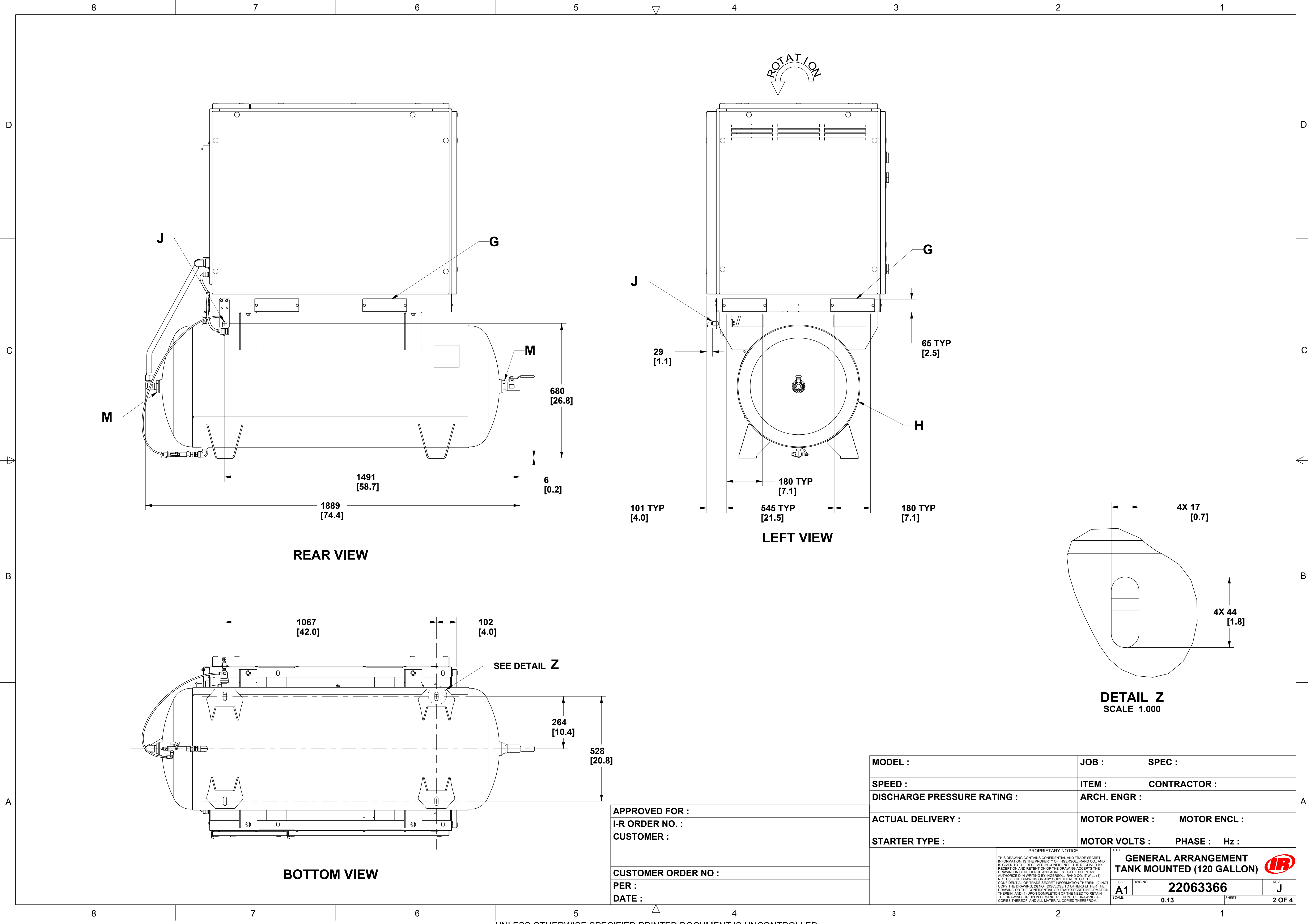


FRONT VIEW




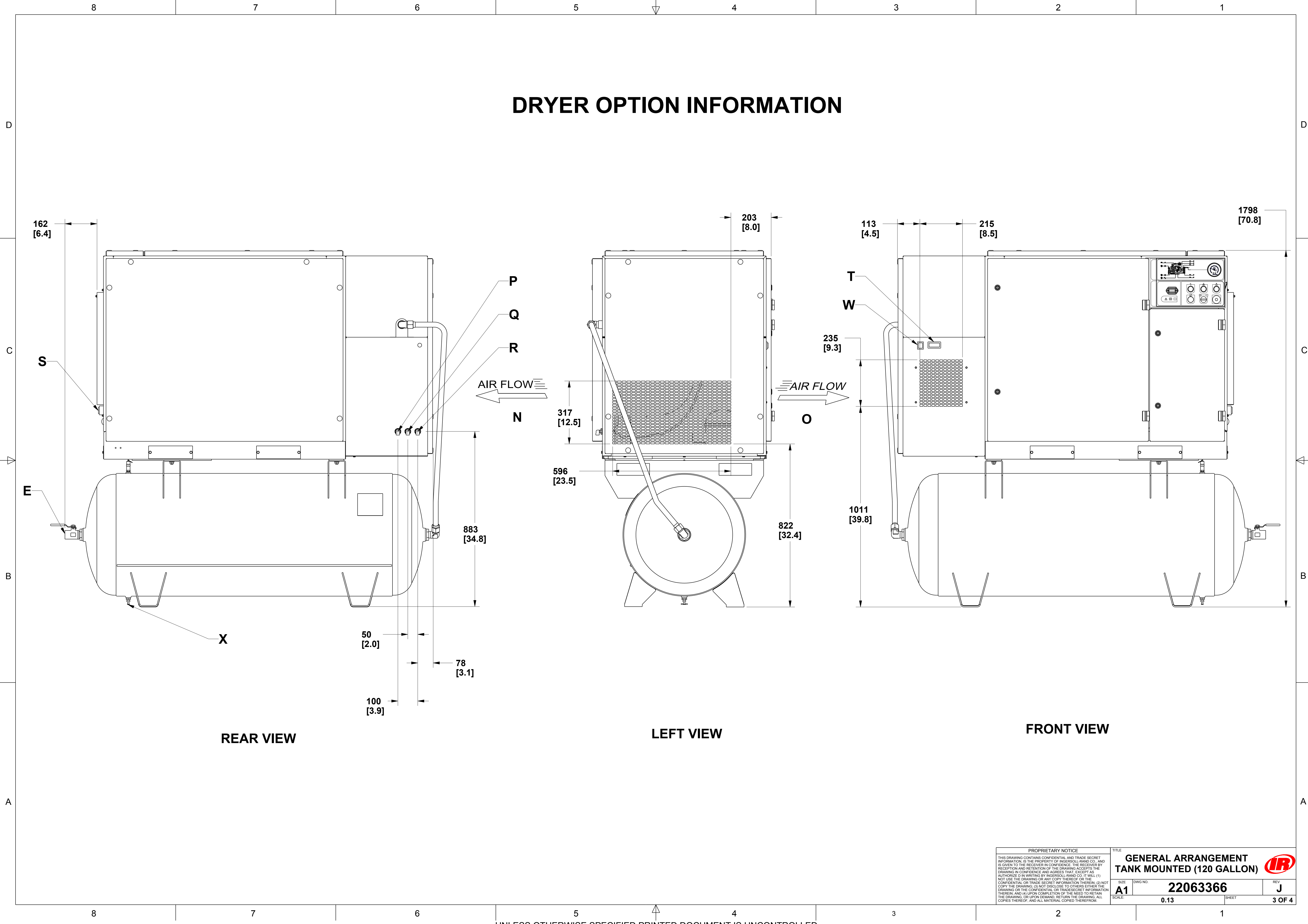
RIGHT VIEW

GENERAL ARRANGEMENT TOLERANCES		WARNING: THE EXPORT OR REEXPORT OF THIS DRAWING OR A PRODUCT PRODUCED BY THIS DRAWING IS SUBJECT TO U.S. EXPORT ADMINISTRATION REGULATIONS AND OTHER APPLICABLE GOVERNMENT RESTRICTIONS OR REGULATIONS.		DO NOT SCALE DRAWING					
ALL DIMENSIONS ARE IN MILLIMETERS [INCHES (IF SHOWN)]		PROPRIETARY NOTICE		DRAWING CONFORMS TO ASME Y14.5M - 1994		THIRD ANGLE PROJECTION		TITLE	
UNSPECIFIED TOLERANCES:		THIS DRAWING CONTAINS CONFIDENTIAL AND TRADE SECRET INFORMATION. IS THE PROPERTY OF INGERSOLL-RAND CO., AND IS GIVEN TO THE RECEIVER IN CONFIDENCE. THE RECEIVER BY RECEPTION AND RETENTION OF THE DRAWING ACCEPTS THE DRAWING IN CONFIDENCE AND AGREES THAT, EXCEPT AS AUTHORIZED IN WRITING BY INGERSOLL-RAND CO. IT WILL (1) NOT USE THE DRAWING OR ANY COPY THEREOF OR THE CONFIDENTIAL OR TRADE SECRET INFORMATION THEREIN; (2) NOT COPY THE DRAWING; (3) NOT DISCLOSE TO OTHERS EITHER THE DRAWING OR THE CONFIDENTIAL OR TRADE SECRET INFORMATION THEREIN; AND (4) UPON COMPLETION OF THE NEED TO RETAIN THE DRAWING, OR UPON DEMAND, RETURN THE DRAWING, ALL COPIES THEREOF, AND ALL MATERIAL COPIED THEREFROM.		CAD GENERATED DRAWING, NO MANUAL REVISIONS ALLOWED		DRAWN J.HUNT 2001OCT23		GENERAL ARRANGEMENT	
WHOLE : ±13.0[.50] .X : ±6.0[.25] ANGLES : ± 1°				UNLESS OTHERWISE SPECIFIED: - REMOVE ALL BURRS AND SHARP CORNERS - WELD SYMBOLS TO BE IN ACCORDANCE WITH ANSI/AWS A2.4		CHECKED G.HALLMAN 2001OCT24		TANK MOUNTED (120 GALLON)	
				COPYRIGHT @ 2013 Ingersoll Rand ALL RIGHTS RESERVED		APPROVED S.SHARP M.STICKLAN 2001OCT24		REV	
Ingersoll-Rand Industrial Technologies						DRAWING TYPE General Arrangement Drawing NOMENCLATURE		SIZE A1 0.000 kilogram	
								DWC NO. 22063366	
								SCALE: 0.13 UNIT: PEGASUS	
								SHEET 1 OF 4	



APPROVED FOR :
I-R ORDER NO. :
CUSTOMER :
CUSTOMER ORDER NO :
PER :
DATE :

MODEL :	JOB :	SPEC :
SPEED :	ITEM :	CONTRACTOR :
DISCHARGE PRESSURE RATING :	ARCH. ENGR :	
ACTUAL DELIVERY :	MOTOR POWER :	MOTOR ENCL :
STARTER TYPE :	MOTOR VOLTS :	PHASE : Hz :
<div><div><div>PROPRIETARY NOTICE</div><div>THIS DRAWING CONTAINS CONFIDENTIAL AND TRADE SECRET INFORMATION. IS THE PROPERTY OF INGERSOLL-RAND CO., AND IS GIVEN TO THE RECEIVER IN CONFIDENCE. THE RECEIVER BY RECEIPT AND RETENTION OF THE DRAWING ACCEPTS THE DRAWING IN CONFIDENCE AND AGREES THAT, EXCEPT AS AUTHORIZED IN WRITING BY INGERSOLL-RAND CO., IT WILL (1) NOT USE THE DRAWING OR ANY COPY THEREOF OR THE CONFIDENTIAL OR TRADE SECRET INFORMATION THEREIN; (2) NOT COPY THE DRAWING; (3) NOT DISCLOSE TO OTHERS EITHER THE DRAWING OR THE CONFIDENTIAL OR TRADE SECRET INFORMATION THEREIN; AND (4) UPON COMPLETION OF THE NEED TO RETAIN THE DRAWING OR UPON DEMAND, RETURN THE DRAWING, ALL COPIES THEREOF, AND ALL MATERIAL COPIED THEREFROM.</div></div><div><div>TITLE</div><div>GENERAL ARRANGEMENT TANK MOUNTED (120 GALLON)</div><div></div></div><div><div>SIZE</div><div>A1</div><div>DWG NO.</div><div>22063366</div><div>REV</div><div>J</div></div><div><div>SCALE:</div><div>0.13</div><div>SHEET</div><div>2 OF 4</div></div></div>		



PROPRIETARY NOTICE		TITLE	
<small>THIS DRAWING CONTAINS CONFIDENTIAL AND TRADE SECRET INFORMATION. IS THE PROPERTY OF INGERSOLL-RAND CO. AND IS GIVEN TO THE RECEIVER IN CONFIDENCE. THE RECEIVER BY RECEIPT AND RETENTION OF THE DRAWING ACCEPTS THE DRAWING IN CONFIDENCE AND AGREES THAT, EXCEPT AS AUTHORIZED IN WRITING BY INGERSOLL-RAND CO., IT WILL (1) NOT USE THE DRAWING OR ANY COPY THEREOF OR THE CONFIDENTIAL OR TRADE SECRET INFORMATION THEREIN; (2) NOT COPY THE DRAWING; (3) NOT DISCLOSE TO OTHERS EITHER THE DRAWING OR THE CONFIDENTIAL OR TRADE SECRET INFORMATION THEREIN; AND (4) UPON COMPLETION OF THE NEED TO RETAIN THE DRAWING OR, UPON DEMAND, RETURN THE DRAWING. ALL COPIES THEREOF, AND ALL MATERIAL COPIED THEREFROM.</small>		GENERAL ARRANGEMENT TANK MOUNTED (120 GALLON)	
		SIZE	REV
		A1	J
SCALE: 0.13		SHEET 3 OF 4	

THIS SHEET ILLUSTRATES THE OUTDOOR MODIFICATION OPTION

D

D

C

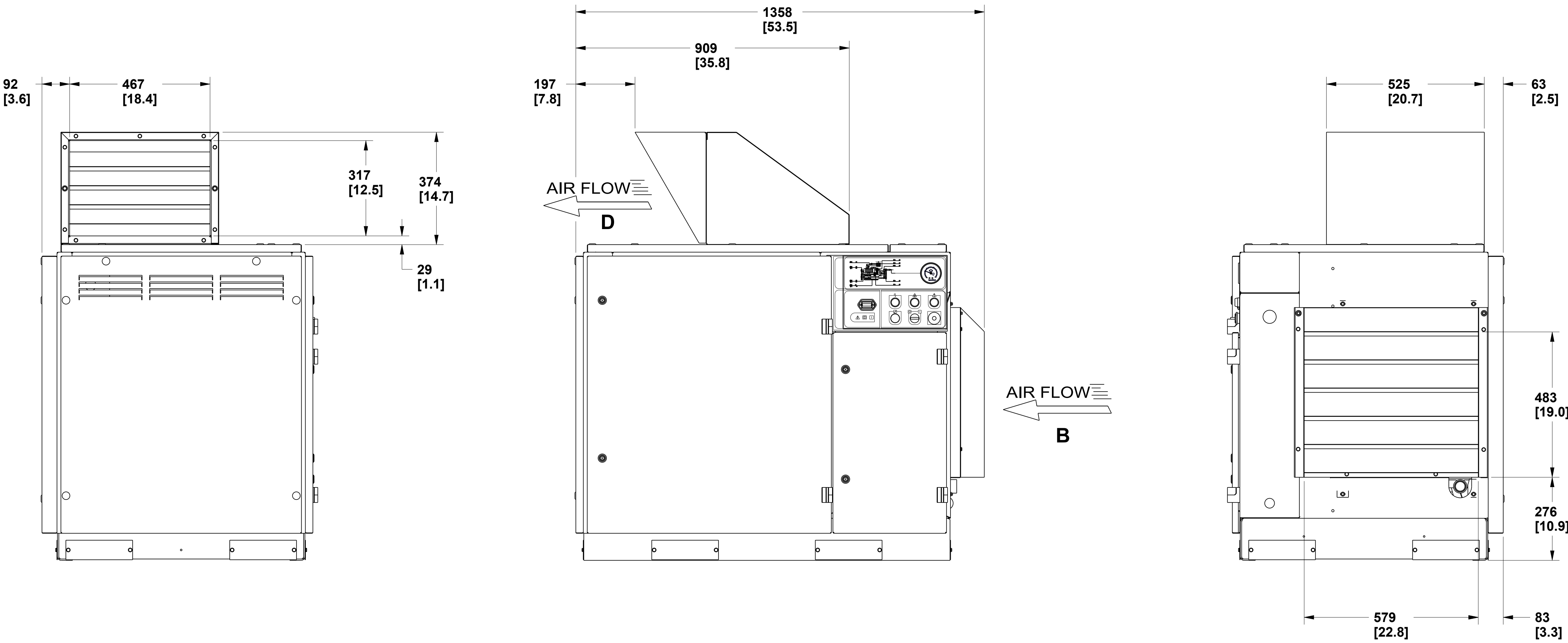
C

B

B

A

A



LEFT VIEW

FRONT VIEW

RIGHT VIEW

PROPRIETARY NOTICE		TITLE	
<small>THIS DRAWING CONTAINS CONFIDENTIAL AND TRADE SECRET INFORMATION. IS THE PROPERTY OF INGERSOLL-RAND CO., AND IS GIVEN TO THE RECEIVER IN CONFIDENCE. THE RECEIVER BY RECEIPT AND RETENTION OF THE DRAWING ACCEPTS THE DRAWING IN CONFIDENCE AND AGREES THAT, EXCEPT AS AUTHORIZED IN WRITING BY INGERSOLL-RAND CO., IT WILL (1) NOT USE THE DRAWING OR ANY COPY THEREOF OR THE CONFIDENTIAL OR TRADE SECRET INFORMATION THEREIN; (2) NOT COPY THE DRAWING; (3) NOT DISCLOSE TO OTHERS EITHER THE DRAWING OR THE CONFIDENTIAL OR TRADE SECRET INFORMATION THEREIN; AND (4) UPON COMPLETION OF THE NEED TO RETAIN THE DRAWING OR UPON DEMAND, RETURN THE DRAWING, ALL COPIES THEREOF, AND ALL MATERIAL COPIED THEREFROM.</small>		GENERAL ARRANGEMENT TANK MOUNTED (120 GALLON)	
		SIZE	REV
		A1	J
		SCALE: 0.13	SHEET 4 OF 4

