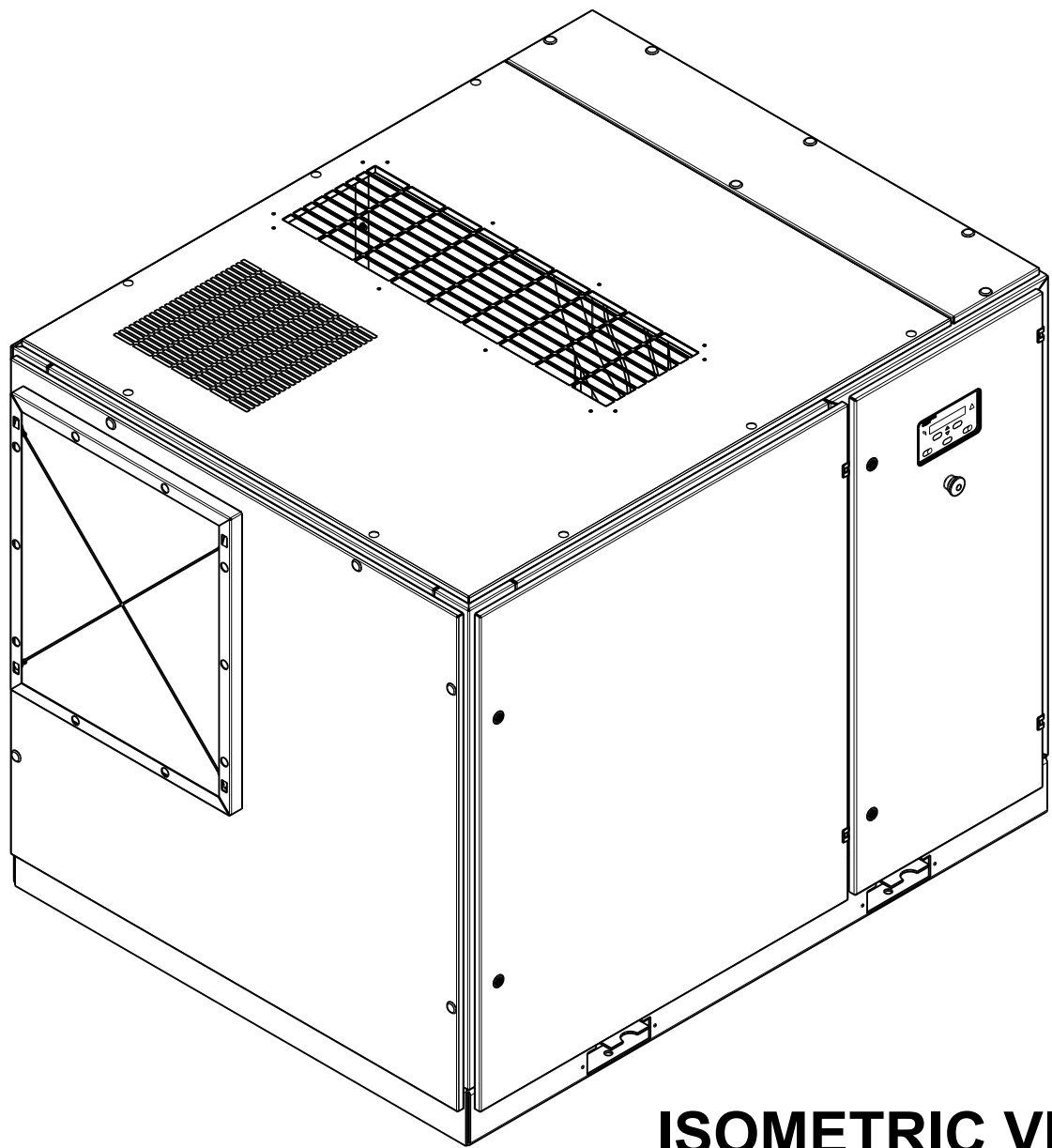


NOTES:

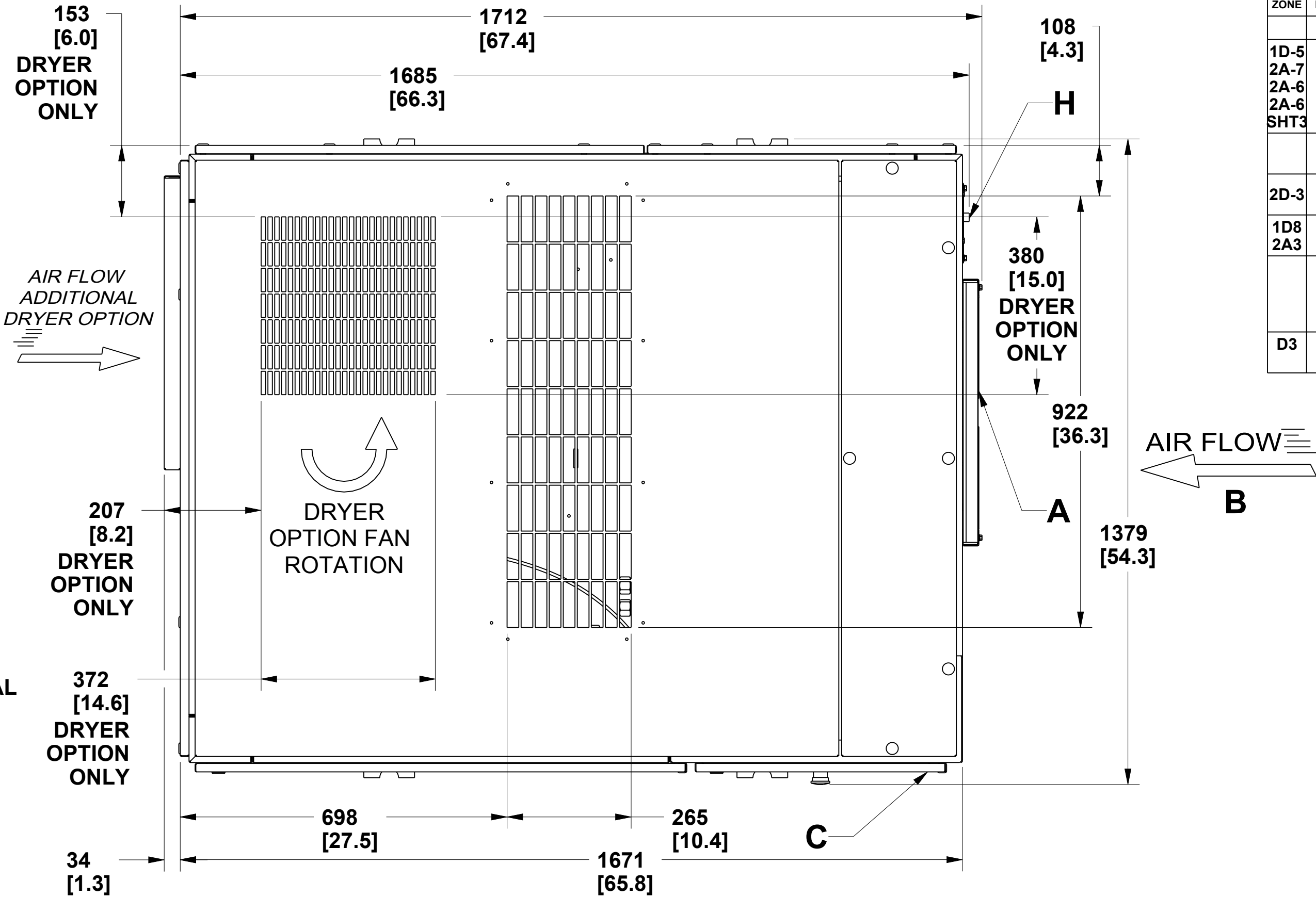
1. APPROXIMATE STANDARD PACKAGE WEIGHTS: 30 HP ODP - 1010 Kg (2226 lbs.)
40 HP ODP - 1055 Kg (2326 lbs.)
50 HP ODP - 1081 Kg (2384 lbs.)
- 30 HP TEFC - 1055 Kg (2326 lbs.)
40 HP TEFC - 1105 Kg (2436 lbs.)
50 HP TEFC - 1123 Kg (2476 lbs.)
2. COOLANT (LUBRICANT) FILL QUANTITY (APPROXIMATE) 20.8 LITERS (5.5 GALLONS)
3. RECOMMENDED CLEARANCE IN FRONT OF CONTROL PANEL DOOR 1125mm (44.25 inches) OR MINIMUM AS REQUIRED BY THE LATEST NATIONAL ELECTRICAL CODES OR APPLICABLE LOCAL CODES.
4. RECOMMENDED CLEARANCES ON TWO SIDES (LEFT AND RIGHT SIDE) 914mm (36 inches).
5. MINIMUM RECOMMENDED CLEARANCE FOR THE REAR OF THE COMPRESSOR IS TO BE 914 mm (36 inches).
6. MINIMUM RECOMMENDED COMPRESSOR TOP CLEARANCE FOR PACKAGE EXHAUST TO BE 914 mm (36 INCHES).
7. EXTERNAL PIPING SHALL NOT EXERT ANY UNRESOLVED MOMENTS OR FORCES ON THE UNIT. USE PIPE SIZE AS LARGE OR LARGER AT DISCHARGE CONNECTION.
8. THERE SHOULD BE NO PLASTIC OR PVC PIPING ATTACHED TO THIS UNIT OR USED FOR ANY LINES DOWN STREAM.
9. FORKLIFT HOLE COVERS MUST BE INSTALLED AFTER UNIT IS IN PLACE TO REDUCE NOISE AND INSURE PROPER COOLING OF PACKAGE.
10. ANY FIELD INSTALLED DUCTING TO AND FROM THE COMPRESSOR CANNOT ADD MORE THAN 12.7mm (0.5 INCHES) OF WATER TOTAL AIR RESISTANCE.
11. DO NOT PIPE INTO A COMMON HEADER WITH A RECIPROCATING COMPRESSOR, UNLESS THE RECIPROCATING COMPRESSOR UTILIZES A DISCHARGE PULSATION DAMPENER.
12. SIZING OF ELECTRICAL COMPONENTS NOT SUPPLIED BY INGERSOLL-RAND IS THE RESPONSIBILITY OF THE CUSTOMER AND SHOULD BE DONE IN ACCORDANCE WITH THE INFORMATION ON THE COMPRESSOR DATA PLATE AND NATIONAL AND LOCAL ELECTRICAL CODES.

KEY

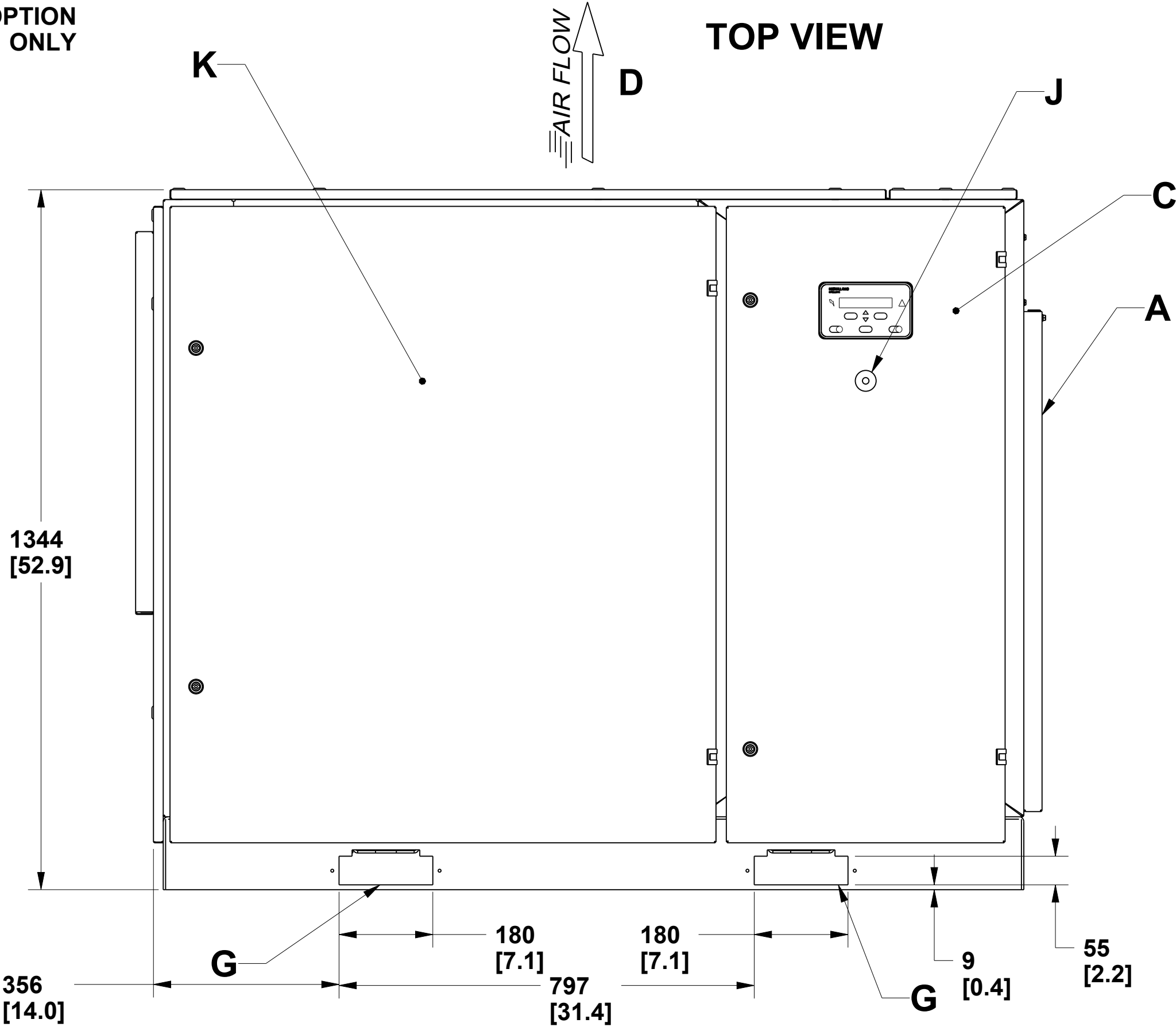
- A PRE-FILTER
B COMPRESSOR AIR INTAKE
C STARTER BOX
D COOLING AIR EXHAUST
E 1.50 INCH FEMALE NPT AIR DISCHARGE
F CUSTOMER POWER INLET
G FORK LIFT OPENINGS (SEE NOTE 9)
H .25 INCH FEMALE NPT MOISTURE SEPARATOR DRAIN
J EMERGENCY STOP BUTTON
K PRIMARY COMPRESSOR SERVICE DOOR



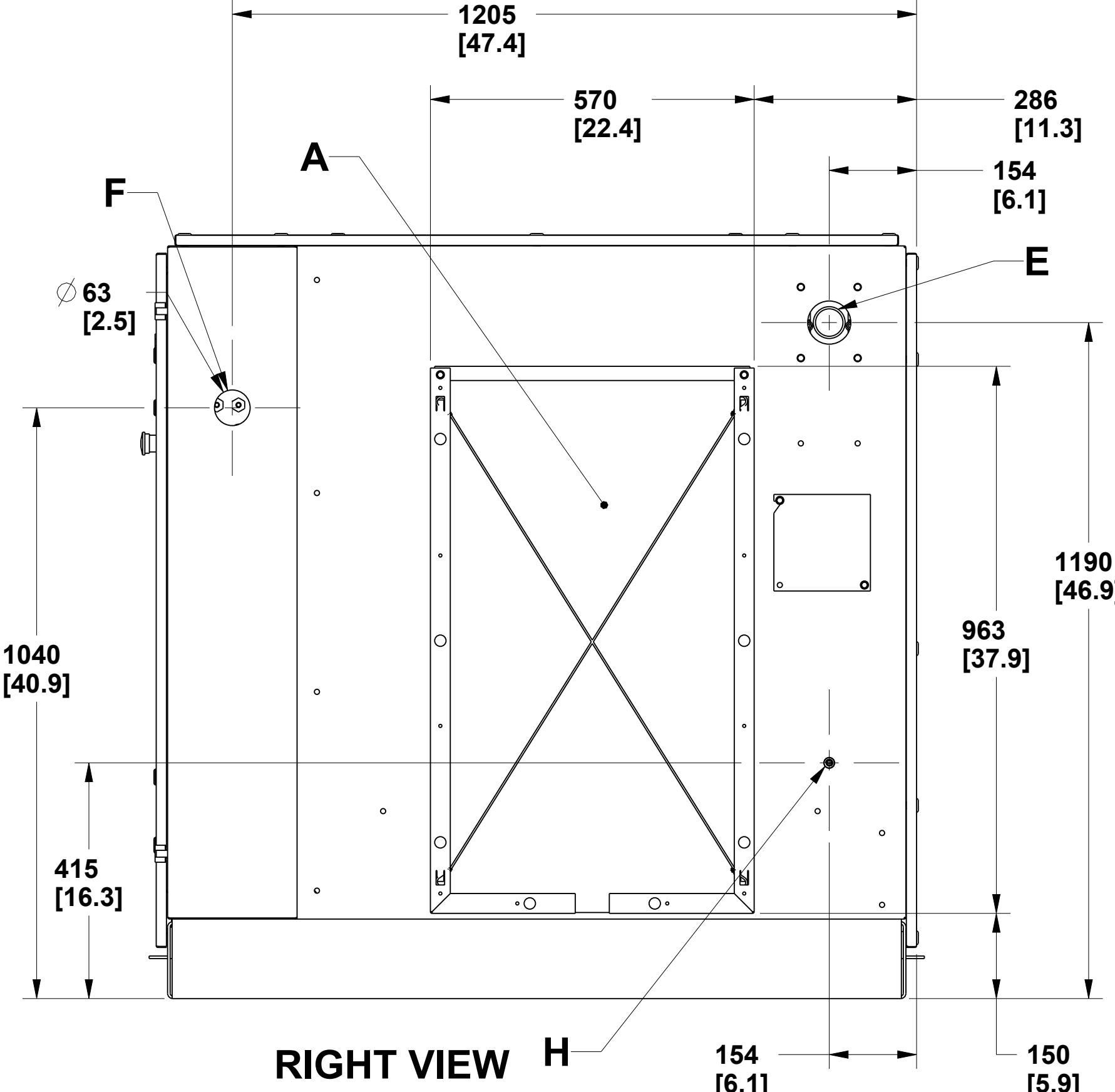
ISOMETRIC VIEW



TOP VIEW



FRONT VIEW



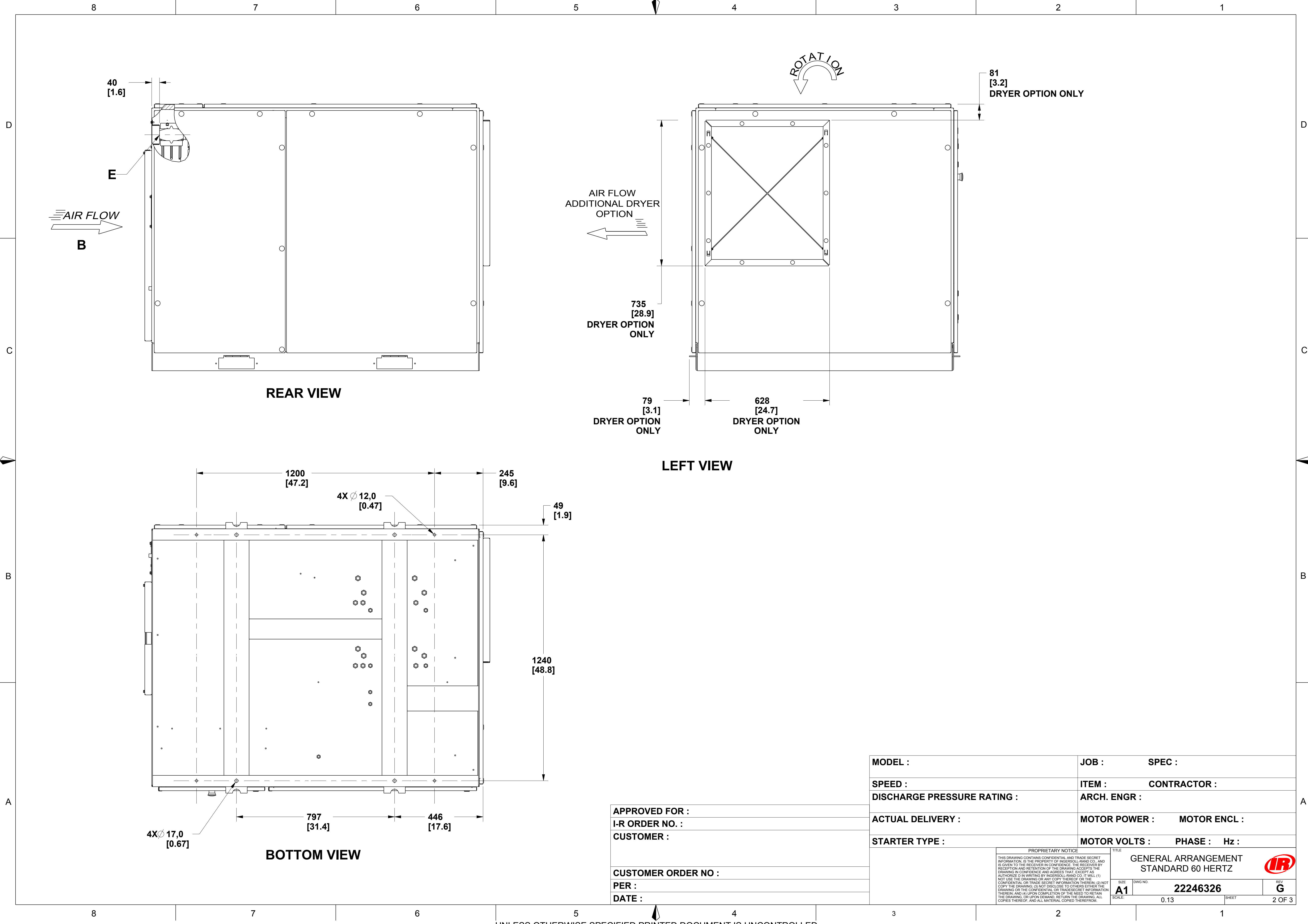
RIGHT VIEW

REVISIONS					
ZONE	REV	ECN	DESCRIPTION	DATE	APV
1D-5	A	03R00250	ORIGINAL RELEASE	2003FEB25	J.HUNT
2A-7	B	03R00543	1379 DIMENSION WAS 1374, Ø 17.0 DIMENSION WAS Ø 15.0, 797 DIMENSION WAS 799, 446 DIMENSION WAS 445, ADDED SHEET 3 FOR ODM AND NON-INTELLISYS.	2003MAY15	J.HUNT
2A-6	C	71419	ADDED DRYER OPTION COMPONENTS AND DIMENSIONS	2004MAR19	VJAY
2A-6	D	76842	NOTE 10: 12.7MM (0.5 INCHES) WAS 6MM (.25 INCHES); UPDATED FORMAT	2007NOV13	S.DIETRICH
SHT3	E	76886	MOVED NOTES AND KEY CHART TO PAGE ONE ADDED TABLE TO SHEET 2	2007DEC11	W.SORAH
	F	81555	UPDATED THE DRAWING TO LATEST FORMAT. NOTE 5 WAS MINIMUM RECOMMENDED CLEARANCE FOR THE REAR OF THE COMPRESSOR IS TO BE 152mm (6 inches).	2013MAR18	C.NAGARAJA
D3	G	82219	REMOVED FLANGE THAT WAS NOT A PART OF THE GENERAL ARRANGEMENT. NO CCN.	2013OCT02	R.PLEASANT

GENERAL ARRANGEMENT TOLERANCES			DO NOT SCALE DRAWING		
ALL DIMENSIONS ARE IN MILLIMETERS [INCHES (IF SHOWN)]			DRAWING CONFORMS TO ASME Y14.5M - 1994		
UNSPECIFIED TOLERANCES:			CAD GENERATED DRAWING, NO MANUAL REVISIONS ALLOWED		
WHOLE : ±13.0[.50] .X : ±6.0[.25] ANGLES : ±1°			UNLESS OTHERWISE SPECIFIED: - REMOVE ALL BURRS AND SHARP CORNERS - WELD SYMBOLS TO BE IN ACCORDANCE WITH ANSI/AWS A2.4		
Ingersoll-Rand Industrial Technologies			COPYRIGHT © 2013 Ingersoll Rand ALL RIGHTS RESERVED		

DRAWN J.HUNT	DATE 2003FEB25
CHECKED G.HALLMAN	DATE 2003FEB25
APPROVED A.BURRIS	DATE 2003FEB25
General Arrangement Drawing	

SIZE A1		ESTIMATED WEIGHT (KG UNLESS OTHERWISE SPECIFIED) 0.0 kilogram		DWG NO. 22246326	
SCALE 0.12		UNIT PEGASUS 40-50HP		REV G	
SHEET		1 OF 3			



APPROVED FOR :	
I-R ORDER NO. :	
CUSTOMER :	
CUSTOMER ORDER NO :	
PER :	
DATE :	

MODEL :	JOB :	SPEC :
SPEED :	ITEM :	CONTRACTOR :
DISCHARGE PRESSURE RATING :	ARCH. ENGR :	
ACTUAL DELIVERY :	MOTOR POWER :	MOTOR ENCL :
STARTER TYPE :	MOTOR VOLTS :	PHASE : Hz :
<div><div><div>PROPRIETARY NOTICE</div><div>THIS DRAWING CONTAINS CONFIDENTIAL AND TRADE SECRET INFORMATION. IS THE PROPERTY OF INGERSOLL-RAND CO., AND IS GIVEN TO THE RECEIVER IN CONFIDENCE. THE RECEIVER BY RECEIPT AND RETENTION OF THE DRAWING ACCEPTS THE DRAWING IN CONFIDENCE AND AGREES THAT, EXCEPT AS AUTHORIZED IN WRITING BY INGERSOLL-RAND CO., IT WILL (1) NOT USE THE DRAWING OR ANY COPY THEREOF OR THE CONFIDENTIAL OR TRADE SECRET INFORMATION THEREIN; (2) NOT COPY THE DRAWING; (3) NOT DISCLOSE TO OTHERS EITHER THE DRAWING OR THE CONFIDENTIAL OR TRADE SECRET INFORMATION THEREIN; AND (4) UPON COMPLETION OF THE NEED TO RETAIN THE DRAWING, OR UPON DEMAND, RETURN THE DRAWING, ALL COPIES THEREOF, AND ALL MATERIAL COPIED THEREFROM.</div></div><div><div>TITLE</div><div>GENERAL ARRANGEMENT STANDARD 60 HERTZ</div></div><div><div>SIZE</div><div>A1</div></div><div><div>DWG NO.</div><div>22246326</div></div><div><div>REV</div><div>G</div></div><div><div>SCALE:</div><div>0.13</div></div><div><div>SHEET</div><div>2 OF 3</div></div></div>		

