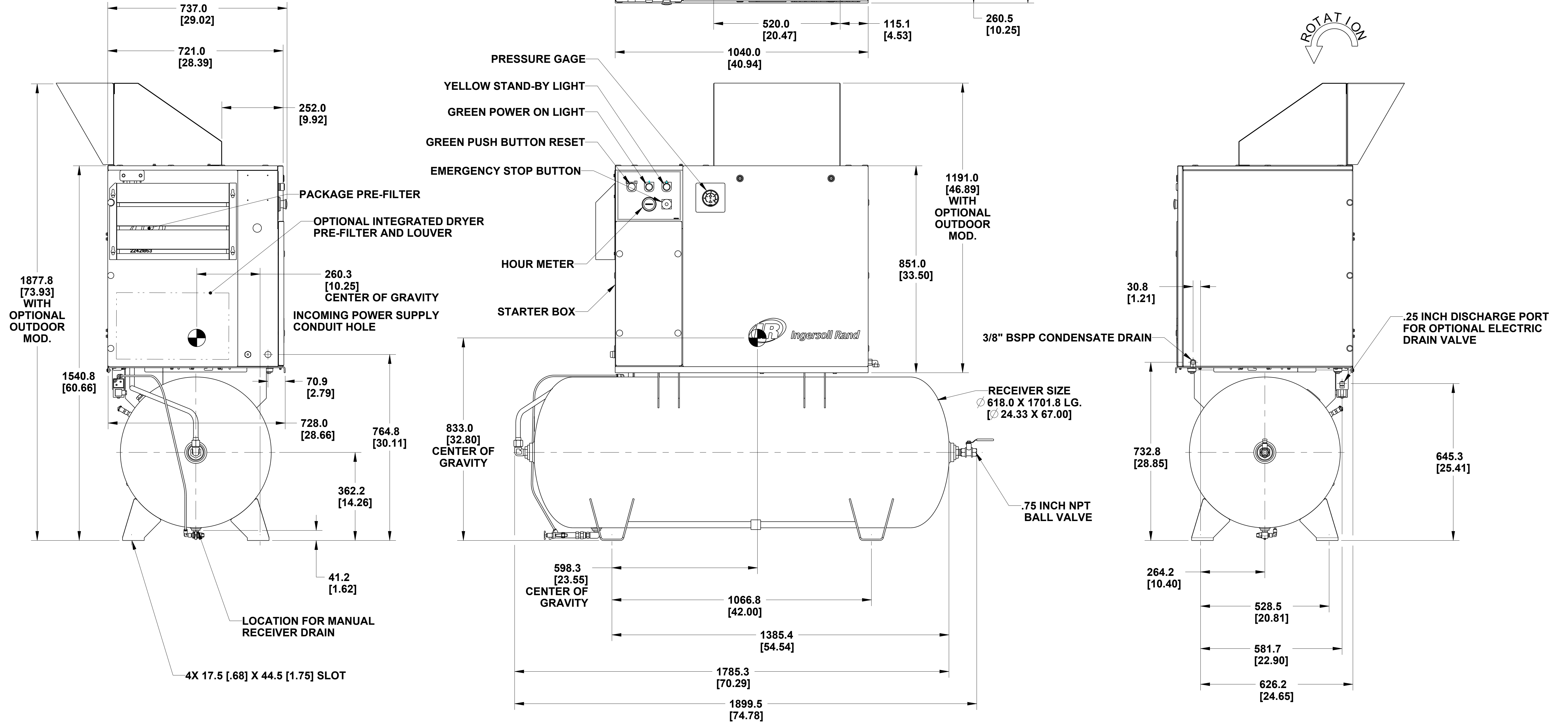


NOTES :

1. FOUNDATION OR FLOOR MUST BE LEVEL AND SUPPORT ALL MOUNTING BOLT LOCATIONS EQUALLY. IF NECESSARY, SHIM OR GROUT THE FOURTH BOLT LOCATION.
2. FOUNDATION BOLTS SHOULD PROJECT THRU NUTS A MINIMUM OF 13mm [.50"] TO ALLOW FOR LEVELING.
3. ALLOW A MINIMUM CLEARANCE OF 1100mm [42"] ON THE FRONT AND 920mm [36"] ON THE TOP, LEFT, RIGHT, AND REAR OF THE PACKAGE FOR PROPER AIR CIRCULATION AND SERVICEABILITY.
4. APPROXIMATE PACKAGE WEIGHT: 430 KG. [946 LBS.].

| REVISIONS            |     |       |   |           |                      |             |
|----------------------|-----|-------|---|-----------|----------------------|-------------|
| ZONE                 | REV | ECN   | DESCRIPTION   | DATE      | DRAWN                | APP'D       |
|                      | A   | 71433 | ORIGINAL RELEASE  | 2004JUN28 | VIJAY                | B.WISE      |
|                      | B   | 73832 | ADD THIRD SHEET, UPDATED FORMAT<br>ADD OPTIONAL OUTDOOR MOD.<br>ADD CONTROL AIR CONDENSATE OUTLET<br>ADD REVISION BLOCK                             | 2006NOV30 | M.CAIN               | C.FRAZIER   |
| 1-B5                 | C   | 74318 | I-R LOGO DECAL 23038474 WAS 22050611  | 2007FEB17 | ISB/NH               | K.WHITESELL |
| 1-B7                 | D   | 76570 | ADDED INCOMING POWER DIM'S: 70.9 AND 764.8<br>ADDED AREA AND NOTE: OPTIONAL<br>INTEGRATED DRYER, PRE-FILTER AND LOUVER                              | 2007OCT22 | R.REDMOND<br>W.SORAH | C.FRAZIER   |
| 2-D6                 |     |       | UPDATED VIEW TO SHOW OPTIONAL DRYER   |           |                      |             |
| 3-D7                 |     |       | REMOVED NOTE: .75" NPT 60HZ, .75" BSPT 50HZ   |           |                      |             |
|                      | E   | 77147 | UPDATED VIEWS TO CURRENT CONFIGURATION  | 2008DEC19 | W.SORAH              | C.FRAZIER   |
| 1-B4<br>1-B4<br>1-B5 | F   | 78580 | UPDATED VIEWS TO CURRENT CONFIGURATION<br>REMOVED LOGO DECAL 22913032.<br>LOGO DECAL 23038466 WAS 22435713.<br>FORKLIFT DECAL 23548985 WAS 93171262 | 2010APR09 | H.AVINASH            | C.FRAZIER   |
| 2-C2                 |     |       | UPDATED VIEW OF PRESSURE SWITCH   |           |                      |             |
|                      | G   | 78494 | UPDATED VIEW OF PRESSURE SWITCH   | 2010JUN04 | R. REDMON            | C.FRAZIER   |



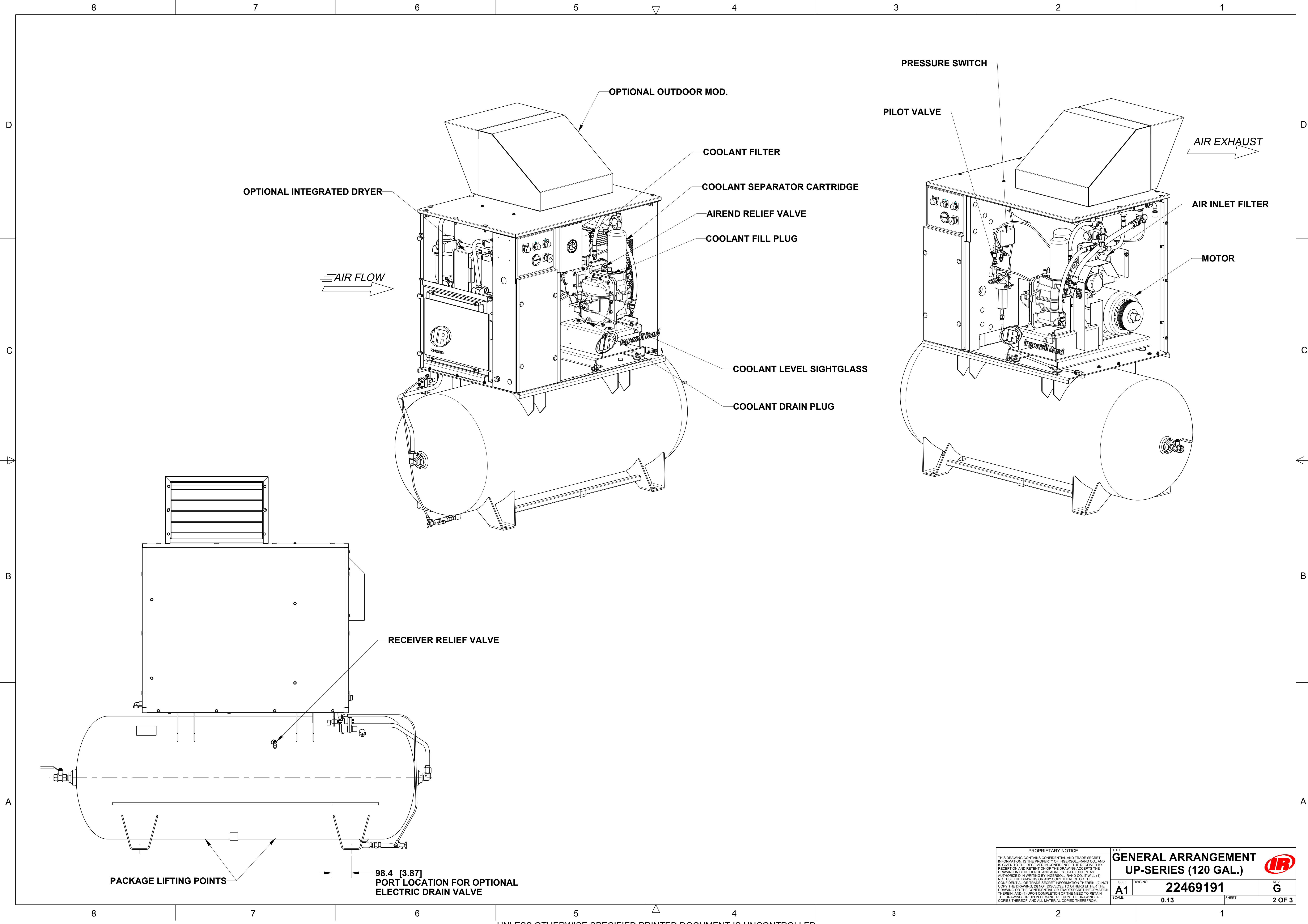
| STANDARD TOLERANCES                                   |  |
|---|--|
| ALL DIMENSIONS ARE IN MILLIMETERS [INCHES (IF SHOWN)] |  |
| UNSPECIFIED TOLERANCES:                               |  |
| WHOLE : $\pm 1$                                       |  |
| ONE PLACE (.X) : $\pm 0.5$                            |  |
| TWO PLACE (.XX) : $\pm 0.25$                          |  |
| ANGLES (.X) : $\pm 1^\circ$                           |  |
| Ingersoll-Rand Industrial Technologies                |  |


|   |  |
|---|--|
| WARNING: THE EXPORT OR REEXPORT OF THIS DRAWING OR A PRODUCT PRODUCED BY THIS DRAWING IS SUBJECT TO U.S. EXPORT ADMINISTRATION REGULATIONS AND OTHER APPLICABLE GOVERNMENT RESTRICTIONS OR REGULATIONS.   |  |
| PROPRIETARY NOTICE  |  |
| THIS DRAWING CONTAINS CONFIDENTIAL AND TRADE SECRET INFORMATION. IS THE PROPERTY OF INGERSOLL-RAND CO., AND IS GIVEN TO THE RECEIVER IN CONFIDENCE. THE RECEIVER BY RECEPTION AND RETENTION OF THE DRAWING ACCEPTS THE DRAWING IN CONFIDENCE AND AGREES THAT, EXCEPT AS AUTHORIZED IN WRITING BY INGERSOLL-RAND CO. IT WILL (1) NOT USE THE DRAWING OR ANY COPY THEREOF OR THE CONFIDENTIAL OR TRADE SECRET INFORMATION THEREIN; (2) NOT COPY THE DRAWING; (3) NOT DISCLOSE TO OTHERS EITHER THE DRAWING OR THE CONFIDENTIAL OR TRADE SECRET INFORMATION THEREIN; AND (4) UPON COMPLETION OF THE NEED TO RETAIN THE DRAWING, OR UPON DEMAND, RETURN THE DRAWING, ALL COPIES THEREOF, AND ALL MATERIAL COPIED THEREFROM. |  |

|  |  |
|--|--|
| DO NOT SCALE DRAWING   |  |
| DRAWING CONFORMS TO ASME Y14.5M - 1994   |  |
| CAD GENERATED DRAWING. NO MANUAL REVISIONS ALLOWED   |  |
| UNLESS OTHERWISE SPECIFIED:<br>- REMOVE ALL BURRS AND SHARP CORNERS<br>- WELD SYMBOLS TO BE IN ACCORDANCE WITH ANSI/AWS A2.4 |  |
| COPYRIGHT © 2010<br>INGERSOLL-RAND COMPANY<br>ALL RIGHTS RESERVED  |  |

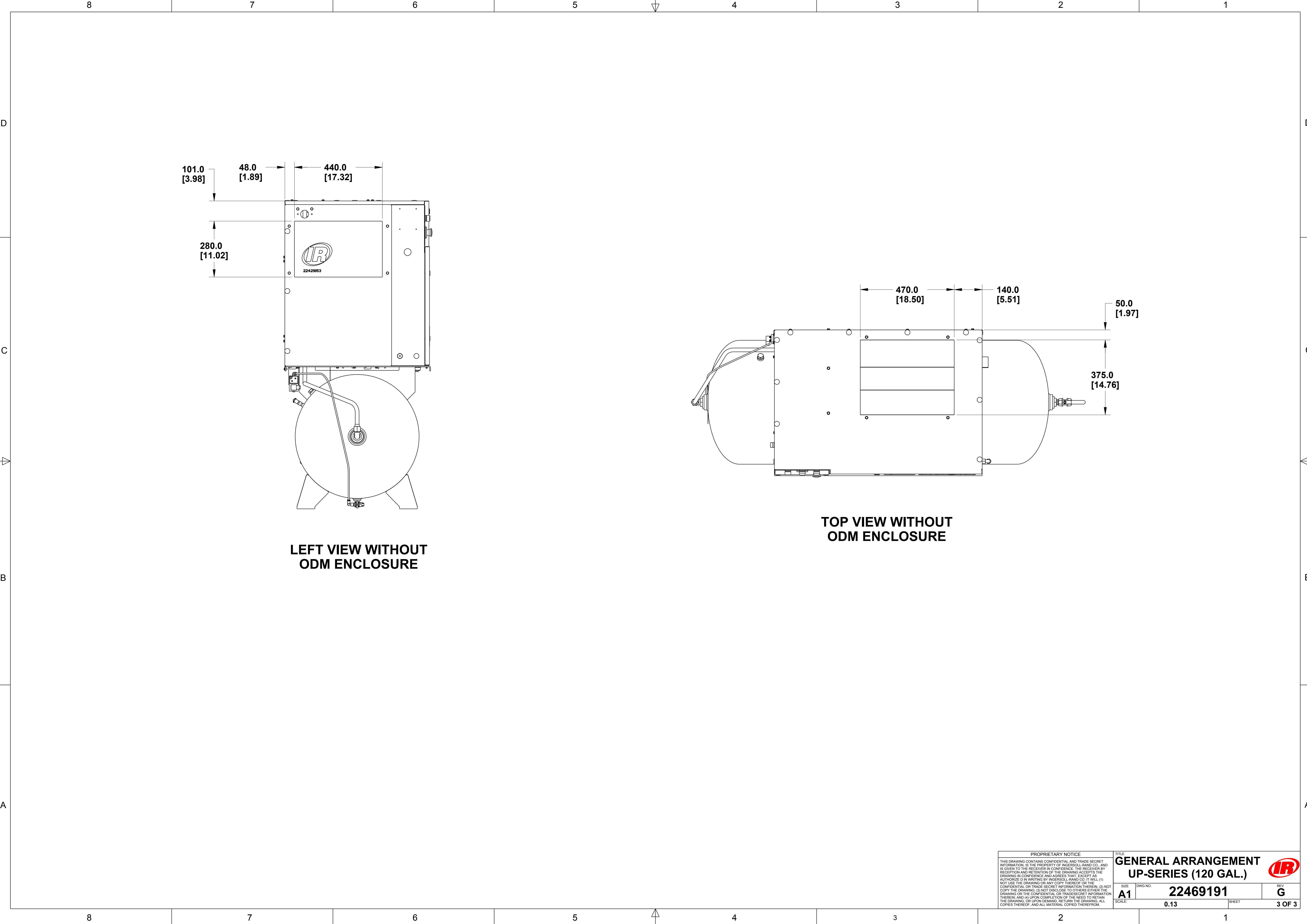
|                               |                                |
|-------------------------------|--------------------------------|
| THIRD ANGLE PROJECTION        |                                |
| DRAWN<br>VIJAY                | DATE<br>2004JUN28              |
| CHECKED                       | DATE                           |
| G.HALLMAN                     | 2004JUN28                      |
| APPROVED<br>S.KUMAR<br>B.WISE | DATE<br>2004JUN28<br>2004JUN28 |

|  |   |                            |                 |
|--|---|----------------------------|-----------------|
|  |   |                            |                 |
| TITLE<br><b>GENERAL ARRANGEMENT<br/>UP-SERIES (120 GAL.)</b> |   |                            |                 |
| SIZE<br><b>A1</b>  | ESTIMATED WEIGHT<br>(KG UNLESS OTHERWISE SPECIFIED)<br><b>0.0</b> | DWG NO.<br><b>22469191</b> | REV<br><b>G</b> |
| SCALE:<br><b>0.13</b>  | UNIT:<br><b>UP-SERIES</b>   | SHEET<br><b>1 OF 3</b>     |                 |



|  |                            |   |  |   |
|--|----------------------------|---|--|---|
| <small>PROPRIETARY NOTICE<br/>THIS DRAWING CONTAINS CONFIDENTIAL AND TRADE SECRET INFORMATION. IS THE PROPERTY OF INGERSOLL-RAND CO., AND IS GIVEN TO THE RECEIVER IN CONFIDENCE. THE RECEIVER BY RECEIPT AND RETENTION OF THE DRAWING ACCEPTS THE DRAWING IN CONFIDENCE AND AGREES THAT, EXCEPT AS AUTHORIZED IN WRITING BY INGERSOLL-RAND CO., IT WILL (1) NOT USE THE DRAWING OR ANY COPY THEREOF OR THE CONFIDENTIAL OR TRADE SECRET INFORMATION THEREIN; (2) NOT COPY THE DRAWING; (3) NOT DISCLOSE TO OTHERS EITHER THE DRAWING OR THE CONFIDENTIAL OR TRADE SECRET INFORMATION THEREIN; AND (4) UPON COMPLETION OF THE NEED TO RETAIN THE DRAWING, OR UPON DEMAND, RETURN THE DRAWING, ALL COPIES THEREOF, AND ALL MATERIAL COPIED THEREFROM.</small> |                            | <b>GENERAL ARRANGEMENT<br/>UP-SERIES (120 GAL.)</b> |  |  |
| SIZE<br><b>A1</b>  | DWG NO.<br><b>22469191</b> | REV<br><b>G</b>                                     |  |   |
| SCALE:<br><b>0.13</b>  | SHEET<br><b>2 OF 3</b>     |   |  |   |





| PROPRIETARY NOTICE   |  | TITLE   |                        |
|--|--|---|------------------------|
| <small>THIS DRAWING CONTAINS CONFIDENTIAL AND TRADE SECRET INFORMATION. IS THE PROPERTY OF INGERSOLL-RAND CO. AND IS GIVEN TO THE RECEIVER IN CONFIDENCE. THE RECEIVER BY ACCEPTANCE AND RETENTION OF THE DRAWING ACCEPTS THE DRAWING IN CONFIDENCE AND AGREES THAT, EXCEPT AS AUTHORIZED IN WRITING BY INGERSOLL-RAND CO. IT WILL (1) NOT USE THE DRAWING OR ANY COPY THEREOF OR THE CONFIDENTIAL OR TRADE SECRET INFORMATION THEREIN; (2) NOT COPY THE DRAWING; (3) NOT DISCLOSE TO OTHERS EITHER THE DRAWING OR THE CONFIDENTIAL OR TRADE SECRET INFORMATION THEREIN; AND (4) UPON COMPLETION OF THE NEED TO RETAIN THE DRAWING OR, UPON DEMAND, RETURN THE DRAWING, ALL COPIES THEREOF, AND ALL MATERIAL COPIED THEREFROM.</small> |  | <b>GENERAL ARRANGEMENT<br/>UP-SERIES (120 GAL.)</b> |                        |
|  |  | SIZE  | REV                    |
|  |  | <b>A1</b>   | <b>G</b>               |
|  |  | DWG NO.<br><b>22469191</b>                          | SHEET<br><b>3 OF 3</b> |
| SCALE: <b>0.13</b>   |  |   |                        |