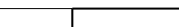
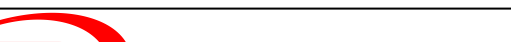
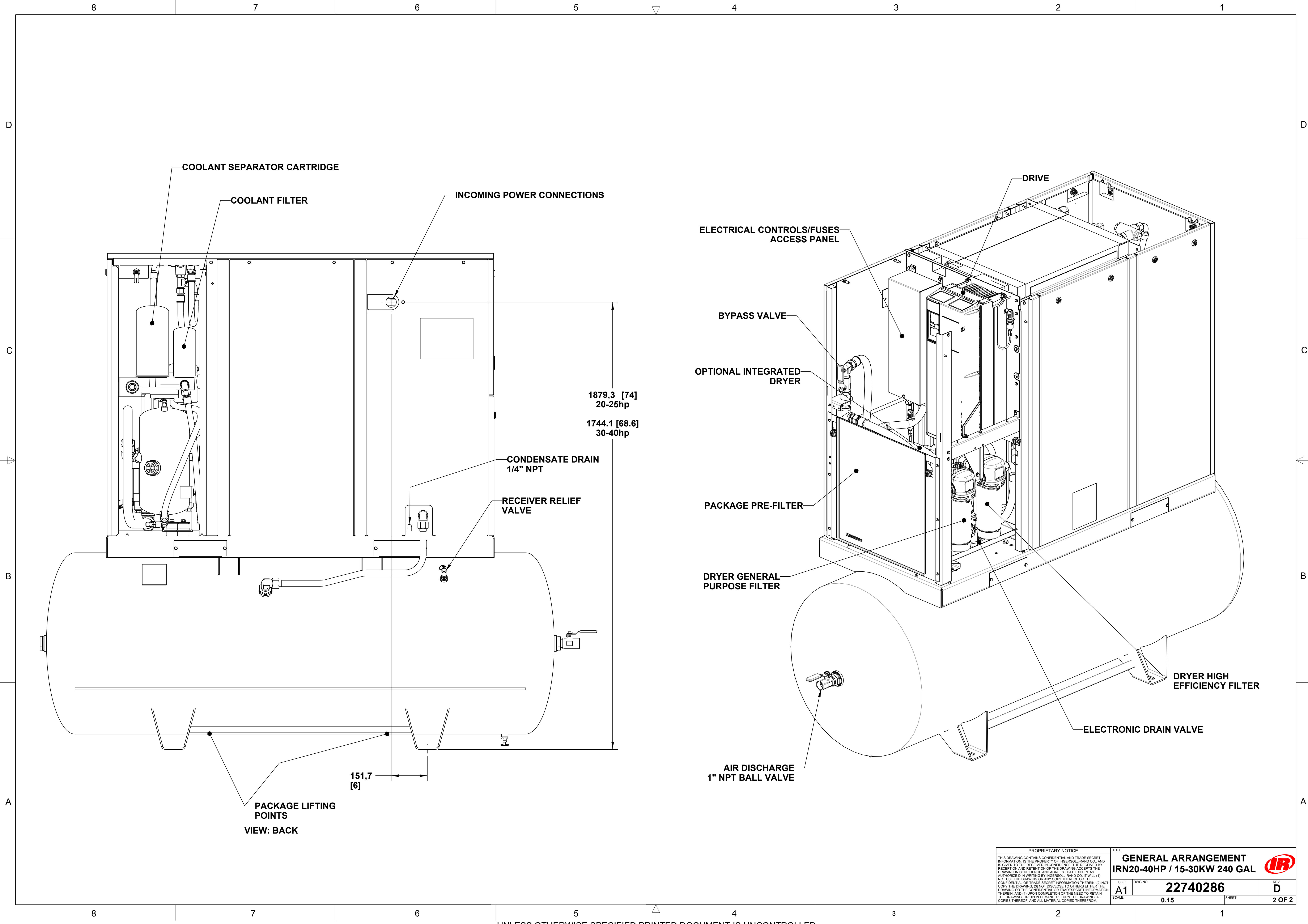


1. FOUNDATION OR FLOOR MUST BE LEVEL AND SUPPORT ALL FEET EQUALLY. IF NECESSARY, SHIM OR GROUT THE FOURTH FOOT.
2. FOUNDATION BOLTS SHOULD PROJECT THROUGH NUTS A MINIMUM OF 13mm [.50"] TO ALLOW FOR LEVELING.
3. ALLOW A MINIMUM CLEARANCE OF 1100mm [42"] ON THE FRONT AND 920mm [36"] ON THE TOP, LEFT, RIGHT AND REAR OF THE PACKAGE FOR PROPER AIR CIRCULATION AND SERVICEABILITY.
4. APPROXIMATE PACKAGE WEIGHT: 858 KG. 1891 LBS.].



REVISIONS						
ZONE	REV	ECN	DESCRIPTION	DATE	DRAWN	APP'D
	A	72988	ORIGINAL RELEASE	2005SEP12	C.LEAMON	S.KUMAR B.WISE
	B	73119	ADDED 30-45hp DIMENSIONS	2005DEC28	C.LEAMON	S.KUMAR B.WISE
	C	73800	UPDATED VIEWS 30-40hp was 30-45hp	2006JUL28	C.LEAMON	S.KUMAR B.WISE
1-D4	D	76824	VIEW: TOP - ADDED DIMENSIONS: 565.0 [22], 466.0 [18], 99.6 [4], 531.0 [21]	2007OCT30	W.SORAH	C.FRAZIER
1-A7			VIEW: AIR DISCHARGE - ADDED DIMENSIONS: 121.8 [5], 480.3 [19], 373.8 [15], 944 [37]			
1-A4			REMOVED DIMENSION 253.3 [10] VIEW: FRONT - CENTER OF GRAVITY 1059.3 [42] WAS 1080.9 [43] REMOVED DIMENSION 1893.6 [75] UPDATED DRAWING FORMAT			

STANDARD TOLERANCES		WARNING: THE EXPORT OR REEXPORT OF THIS DRAWING OR A PRODUCT PRODUCED BY THIS DRAWING IS SUBJECT TO U.S. EXPORT ADMINISTRATION REGULATIONS AND OTHER APPLICABLE GOVERNMENT RESTRICTIONS OR REGULATIONS.		DO NOT SCALE DRAWING DRAWING CONFORMS TO ASME Y14.5M - 1994		 THIRD ANGLE PROJECTION			
ALL DIMENSIONS ARE IN MILLIMETERS [INCHES (IF SHOWN)]		PROPRIETARY NOTICE		CAD GENERATED DRAWING, NO MANUAL REVISIONS ALLOWED		DRAWN C. LEAMON		DATE 2005SEP12	
UNSPECIFIED TOLERANCES:		THIS DRAWING CONTAINS CONFIDENTIAL AND TRADE SECRET INFORMATION, IS THE PROPERTY OF INGERSOLL-RAND CO., AND IS GIVEN TO THE RECEIVER IN CONFIDENCE. THE RECEIVER BY RECEPTION AND RETENTION OF THE DRAWING ACCEPTS THE DRAWING IN CONFIDENCE AND AGREES THAT, EXCEPT AS AUTHORIZED IN WRITING BY INGERSOLL-RAND CO. IT WILL (1) NOT USE THE DRAWING OR ANY COPY THEREOF OR THE CONFIDENTIAL OR TRADE SECRET INFORMATION THEREIN; (2) NOT COPY THE DRAWING; (3) NOT DISCLOSE TO OTHERS EITHER THE DRAWING OR THE CONFIDENTIAL OR TRADE SECRET INFORMATION THEREIN; AND (4) UPON COMPLETION OF THE NEED TO RETAIN THE DRAWING, OR UPON DEMAND, RETURN THE DRAWING, ALL COPIES THEREOF, AND ALL MATERIAL COPIED THEREFROM.		UNLESS OTHERWISE SPECIFIED: - REMOVE ALL BURRS AND SHARP CORNERS - WELD SYMBOLS TO BE IN ACCORDANCE WITH ANSI/AWS A2.4		CHECKED S. KUMAR		DATE 2005SEP12	
WHOLE ± 1 ONE PLACE (X) ± 0.5 TWO PLACE (XX) ± 0.25 ANGLES (X) ± 1°						APPROVED B. WISE		DATE 2005SEP12	
Ingersoll-Rand Industrial Technologies				COPYRIGHT © 2007 INGERSOLL-RAND COMPANY ALL RIGHTS RESERVED		SIZE A1		ESTIMATED WEIGHT (KG LBS) (UNLESS OTHERWISE SPECIFIED) 22740286	
						SCALE: 0.09		UNIT: NIRVANA	
						SHEET		REV D	
								1 OF 2	



COOLANT SEPARATOR CARTRIDGE

COOLANT FILTER

INCOMING POWER CONNECTIONS

1879.3 [74]
20-25hp

1744.1 [68.6]
30-40hp

CONDENSATE DRAIN
1/4" NPT

RECEIVER RELIEF
VALVE

151,7
[6]

PACKAGE LIFTING
POINTS

VIEW: BACK

DRIVE

ELECTRICAL CONTROLS/FUSES
ACCESS PANEL

BYPASS VALVE

OPTIONAL INTEGRATED
DRYER


PACKAGE PRE-FILTER

DRYER GENERAL
PURPOSE FILTER

AIR DISCHARGE
1" NPT BALL VALVE

DRYER HIGH
EFFICIENCY FILTER

ELECTRONIC DRAIN VALVE

PROPRIETARY NOTICE		TITLE		
THIS DRAWING CONTAINS CONFIDENTIAL AND TRADE SECRET INFORMATION. IS THE PROPERTY OF INGERSOLL-RAND CO. AND IS GIVEN TO THE RECEIVER IN CONFIDENCE. THE RECEIVER BY ACCEPTANCE AND RETENTION OF THE DRAWING ACCEPTS THE DRAWING IN CONFIDENCE AND AGREES THAT, EXCEPT AS AUTHORIZED IN WRITING BY INGERSOLL-RAND CO. IT WILL (1) NOT USE THE DRAWING OR ANY COPY THEREOF OR THE CONFIDENTIAL OR TRADE SECRET INFORMATION THEREIN; (2) NOT COPY THE DRAWING; (3) NOT DISCLOSE TO OTHERS EITHER THE DRAWING OR THE CONFIDENTIAL OR TRADE SECRET INFORMATION THEREIN; AND (4) UPON COMPLETION OF THE NEED TO RETAIN THE DRAWING OR UPON DEMAND, RETURN THE DRAWING, ALL COPIES THEREOF, AND ALL MATERIAL COPIED THEREFROM.		GENERAL ARRANGEMENT		
		IRN20-40HP / 15-30KW 240 GAL		
SIZE	DWG NO.	REV		
A1	22740286	D		
SCALE:	0.15		SHEET	2 OF 2