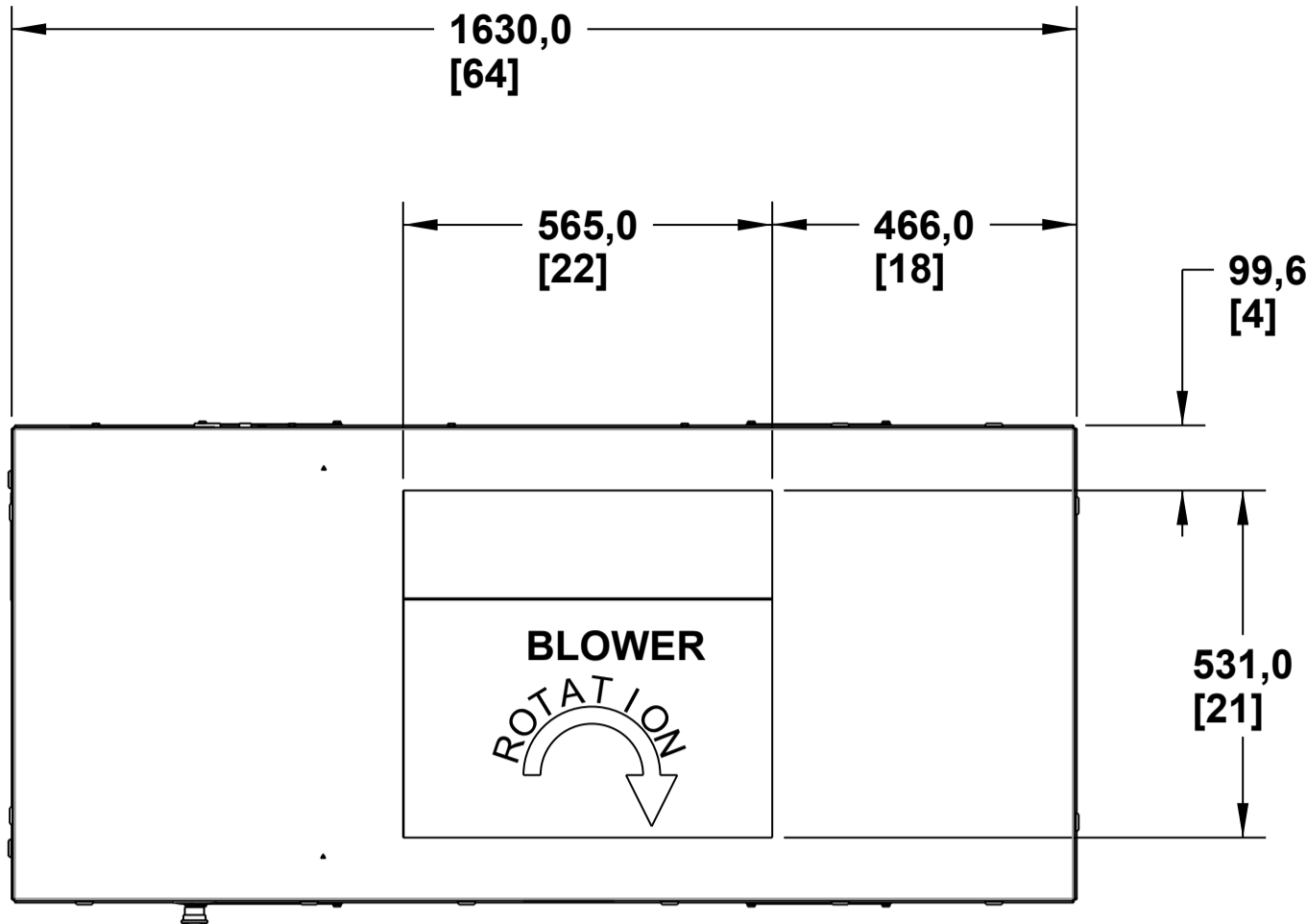
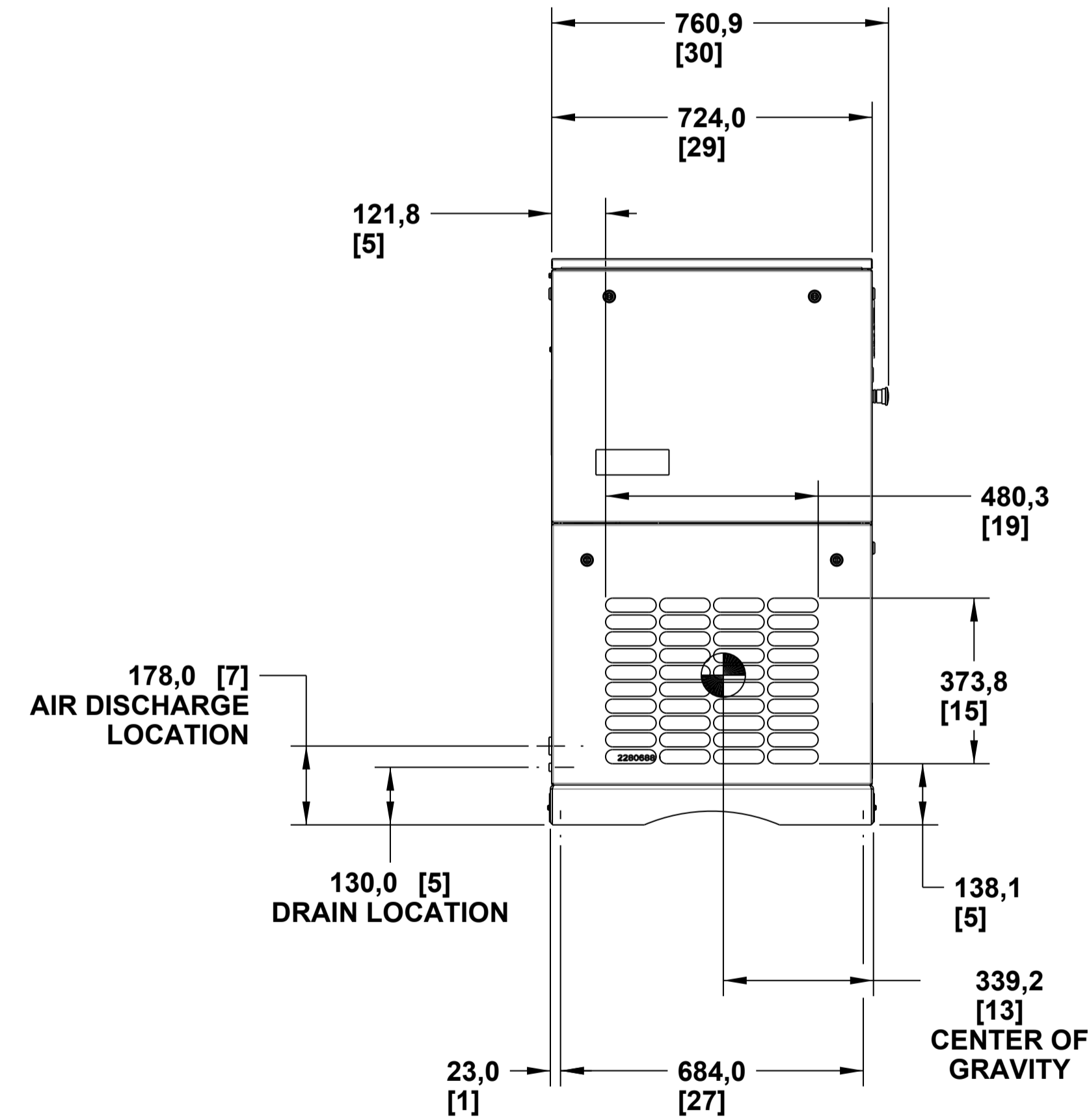


NOTES:

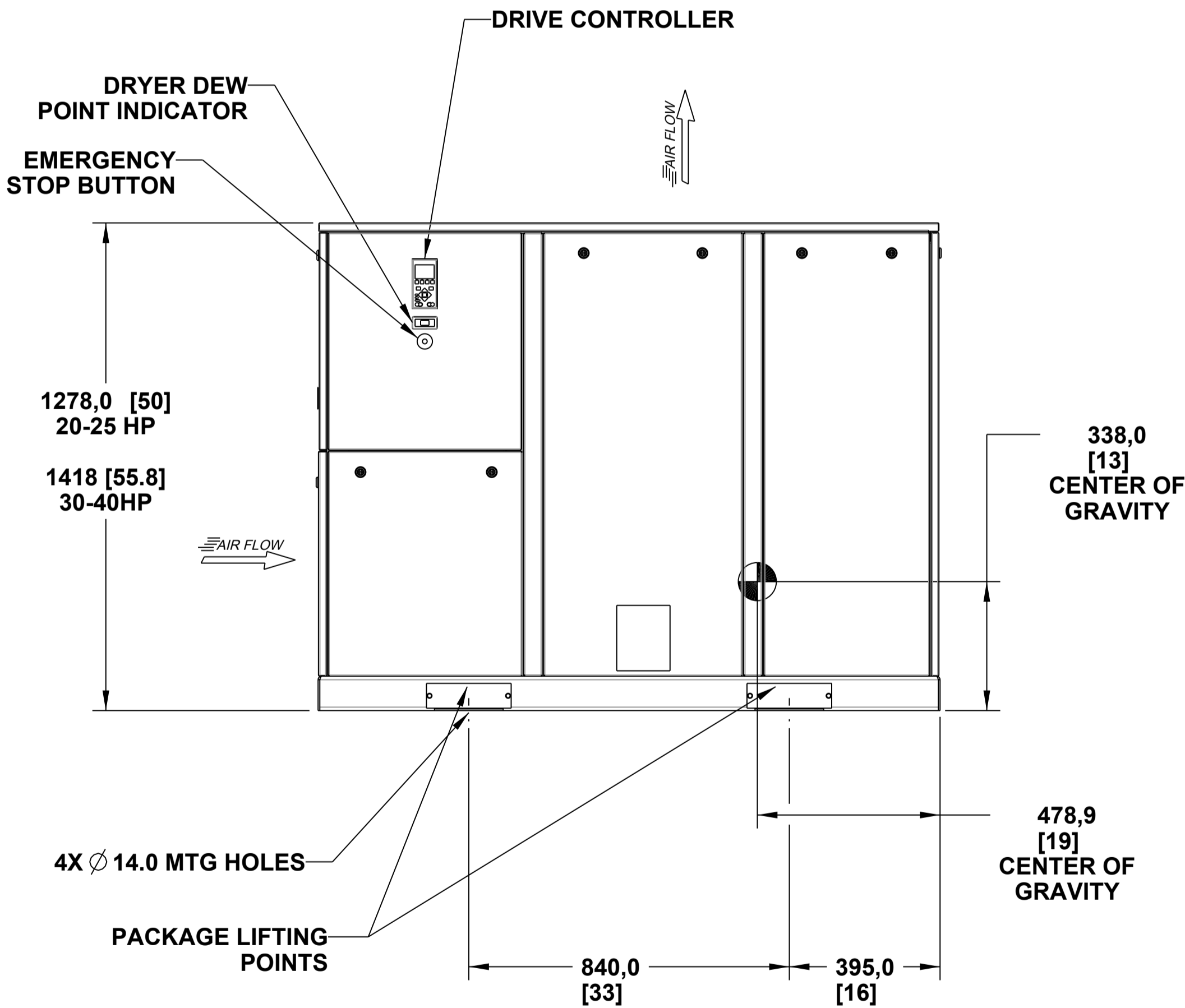
1. FOUNDATION OR FLOOR MUST BE LEVEL AND SUPPORT ALL FEET EQUALLY. IF NECESSARY, SHIM OR GROUT THE FOURTH FOOT.
2. FOUNDATION BOLTS SHOULD PROJECT THROUGH NUTS A MINIMUM OF 13mm [.50"] TO ALLOW FOR LEVELING.
3. ALLOW A MINIMUM CLEARANCE OF 1100mm [42"] ON THE FRONT AND 920mm [36"] ON THE TOP, LEFT, RIGHT AND REAR OF THE PACKAGE FOR PROPER AIR CIRCULATION AND SERVICEABILITY.
4. APPROXIMATE PACKAGE WEIGHT: 612 KG. [1350 LBS.].



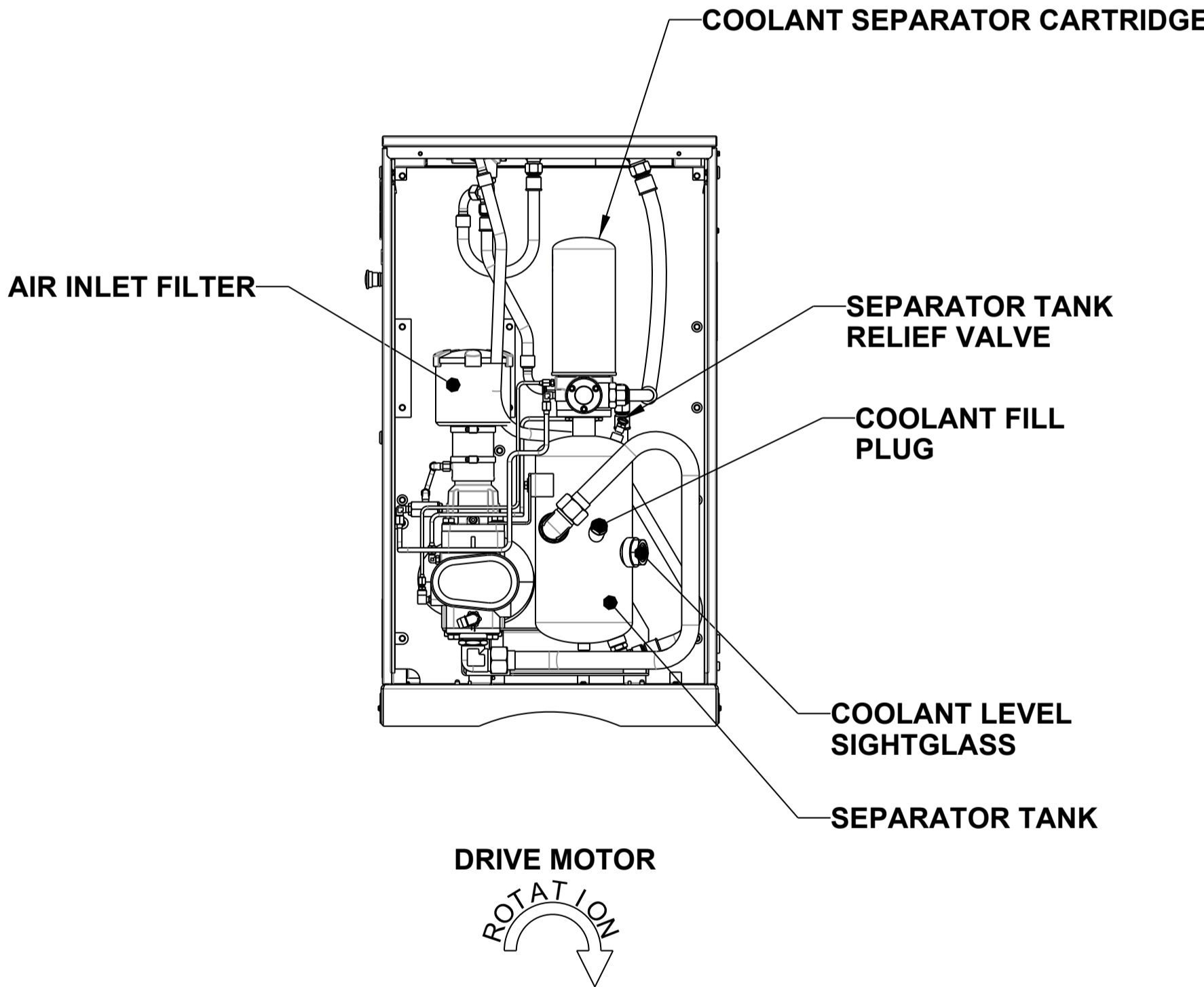
VIEW: TOP



VIEW: AIR DISCHARGE SIDE



VIEW: FRONT



VIEW: AIREND SIDE

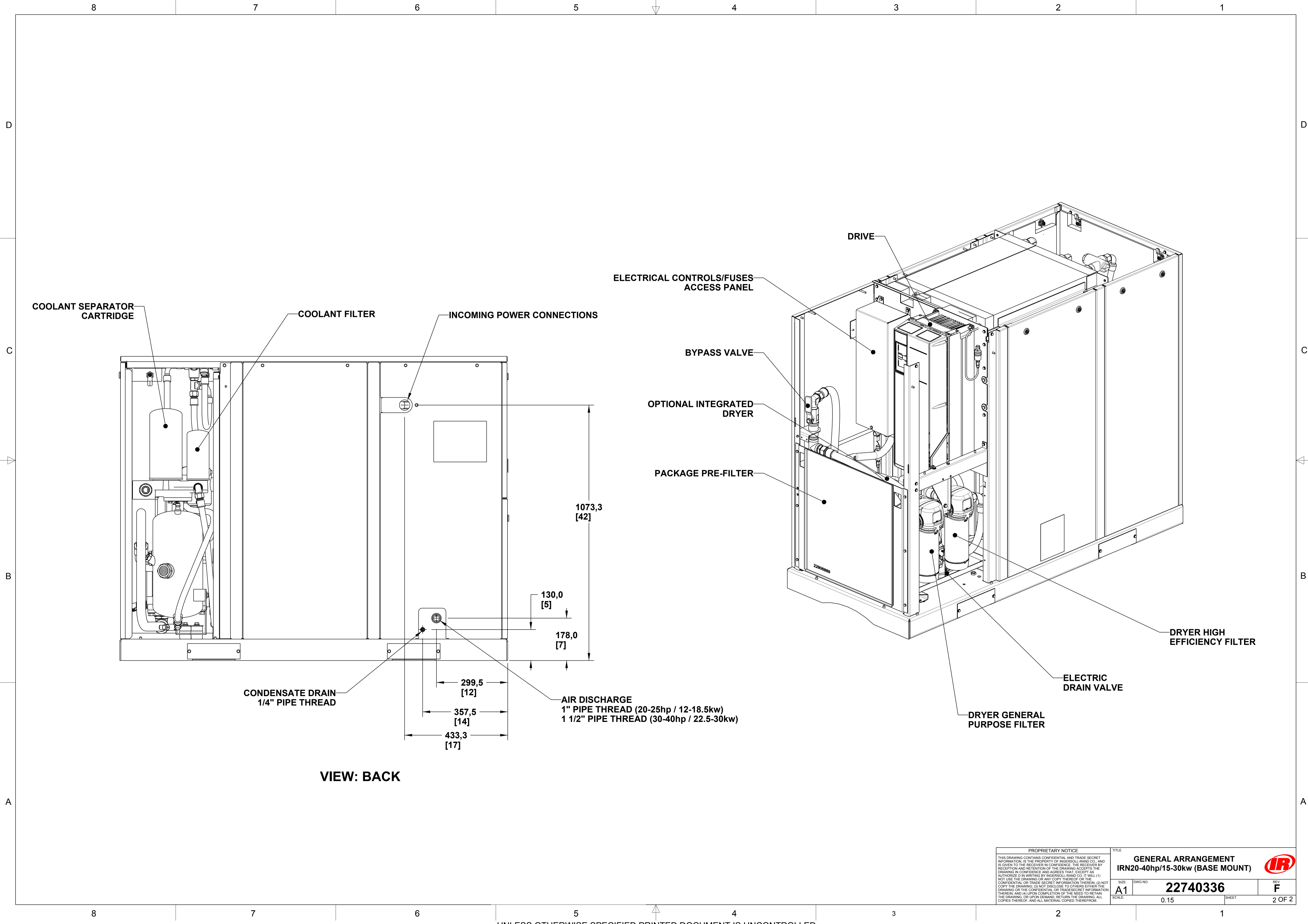
REVISIONS					
ZONE	REV	ECN	DESCRIPTION	DATE	APP'D
	A	72988	ORIGINAL RELEASE	2005SEP12	S.KUMAR B.WISE
	B	73119	ADDED 30-45hp DIMENSIONS	2005DEC28	S.KUMAR B.WISE
	C	73800	UPDATED VIEWS 30-40HP WAS 30-45HP	2006JUL28	S.KUMAR B.WISE
	D	73968	ADDED MOUNTING HOLE LOCATION DIMENSIONS	2006SEP29	S.KUMAR B.WISE
B6	E	74033	ADDED DIM. 1278 [50] / 1418 [55.8] REMOVED DIM. 1188 [47] / 1328 [52.2]	2006OCT30	S.KUMAR B.WISE
1-D4	F	76824	SHEET 1 VIEW: TOP - ADDED DIMENSIONS: 565.0 [22], 466.0 [18], 99.6 [4], 531.0 [21]. VIEW: AIR DISCHARGE - ADDED DIMENSIONS: 121.8 [5], 480.3 [19], 373.8 [15], 138.1 [5]. CENTER OF GRAVITY DIM 339.2 [13] WAS 341.1 [13]. VIEW: FRONT - CENTER OF GRAVITY DIMENSIONS: 338.0 [13] WAS 453.0 [18] 478.9 [19] WAS 481.4 [19].	2007OCT31	W.SORAH C.FRAZIER
1-B7			SHEET 2 VIEW: BACK - ADDED DIMENSIONS: INCOMING POWER: 10733.3 [42], 433.3 [17]. CONDENSATE DRAIN: 130.0 [5], 357.5 [14]. AIR DISCHARGE: 178.0 [7], 299.5 [12]. UPDATED DRAWING FORMAT		
1-B4					
2-B5					

STANDARD TOLERANCES	
ALL DIMENSIONS ARE IN MILLIMETERS [INCHES (IF SHOWN)]	UNSPECIFIED TOLERANCES:
WHOLE : ± 1	ONE PLACE (.X) : ± 0.5
TWO PLACE (.XX) : ± 0.25	ANGLES (.X) : ± 1°
Ingersoll-Rand Industrial Technologies	

WARNING: THE EXPORT OR REEXPORT OF THIS DRAWING OR A PRODUCT PRODUCED BY THIS DRAWING IS SUBJECT TO U.S. EXPORT ADMINISTRATION REGULATIONS AND OTHER APPLICABLE GOVERNMENT RESTRICTIONS OR REGULATIONS.	
PROPRIETARY NOTICE	
THIS DRAWING CONTAINS CONFIDENTIAL AND TRADE SECRET INFORMATION. IS THE PROPERTY OF INGERSOLL-RAND CO., AND IS GIVEN TO THE RECEIVER IN CONFIDENCE. THE RECEIVER BY RECEPTION AND RETENTION OF THE DRAWING ACCEPTS THE DRAWING IN CONFIDENCE AND AGREES THAT, EXCEPT AS AUTHORIZED IN WRITING BY INGERSOLL-RAND CO. IT WILL (1) NOT USE THE DRAWING OR ANY COPY THEREOF OR THE CONFIDENTIAL OR TRADE SECRET INFORMATION THEREIN; (2) NOT COPY THE DRAWING; (3) NOT DISCLOSE TO OTHERS EITHER THE DRAWING OR THE CONFIDENTIAL OR TRADE SECRET INFORMATION THEREIN; AND (4) UPON COMPLETION OF THE NEED TO RETAIN THE DRAWING, OR UPON DEMAND, RETURN THE DRAWING, ALL COPIES THEREOF, AND ALL MATERIAL COPIED THEREFROM.	
DO NOT SCALE DRAWING DRAWING CONFORMS TO ASME Y14.5M - 1994	
CAD GENERATED DRAWING. NO MANUAL REVISIONS ALLOWED	
UNLESS OTHERWISE SPECIFIED: - REMOVE ALL BURRS AND SHARP CORNERS - WELD SYMBOLS TO BE IN ACCORDANCE WITH ANSI/AWS A2.4	
COPYRIGHT © 2007 INGERSOLL-RAND COMPANY ALL RIGHTS RESERVED	

THIRD ANGLE PROJECTION	
DRAWN C. LEAMON	DATE 2005SEP12
CHECKED S. KUMAR	DATE 2005SEP12
APPROVED B. WISE	DATE 2005SEP12

TITLE GENERAL ARRANGEMENT IRN20-40hp/15-30kw (BASE MOUNT)			
SIZE A1	ESTIMATED WEIGHT (KG UNLESS OTHERWISE SPECIFIED) SEE NOTES	DWG NO. 22740336	REV F
SCALE 0.09	UNIT NIRVANA	SHEET 1 OF 2	



VIEW: BACK

PROPRIETARY NOTICE		TITLE	
THIS DRAWING CONTAINS CONFIDENTIAL AND TRADE SECRET INFORMATION. IS THE PROPERTY OF INgersoll-RAND CO. AND IS GIVEN TO THE RECEIVER IN CONFIDENCE. THE RECEIVER BY RECEIPT AND RETENTION OF THE DRAWING ACCEPTS THE DRAWING IN CONFIDENCE AND AGREES THAT, EXCEPT AS AUTHORIZED IN WRITING BY INgersoll-RAND CO. IT WILL (1) NOT USE THE DRAWING OR ANY COPY THEREOF OR THE CONFIDENTIAL OR TRADE SECRET INFORMATION THEREIN; (2) NOT COPY THE DRAWING; (3) NOT DISCLOSE TO OTHERS EITHER THE DRAWING OR THE CONFIDENTIAL OR TRADE SECRET INFORMATION THEREIN; AND (4) UPON COMPLETION OF THE NEED TO RETAIN THE DRAWING OR UPON DEMAND, RETURN THE DRAWING. ALL COPIES THEREOF, AND ALL MATERIAL COPIED THEREFROM.		GENERAL ARRANGEMENT IRN20-40hp/15-30kw (BASE MOUNT)	
SIZE	DWG NO.	REV	
A1	22740336	F	
SCALE:	0.15	SHEET	2 OF 2