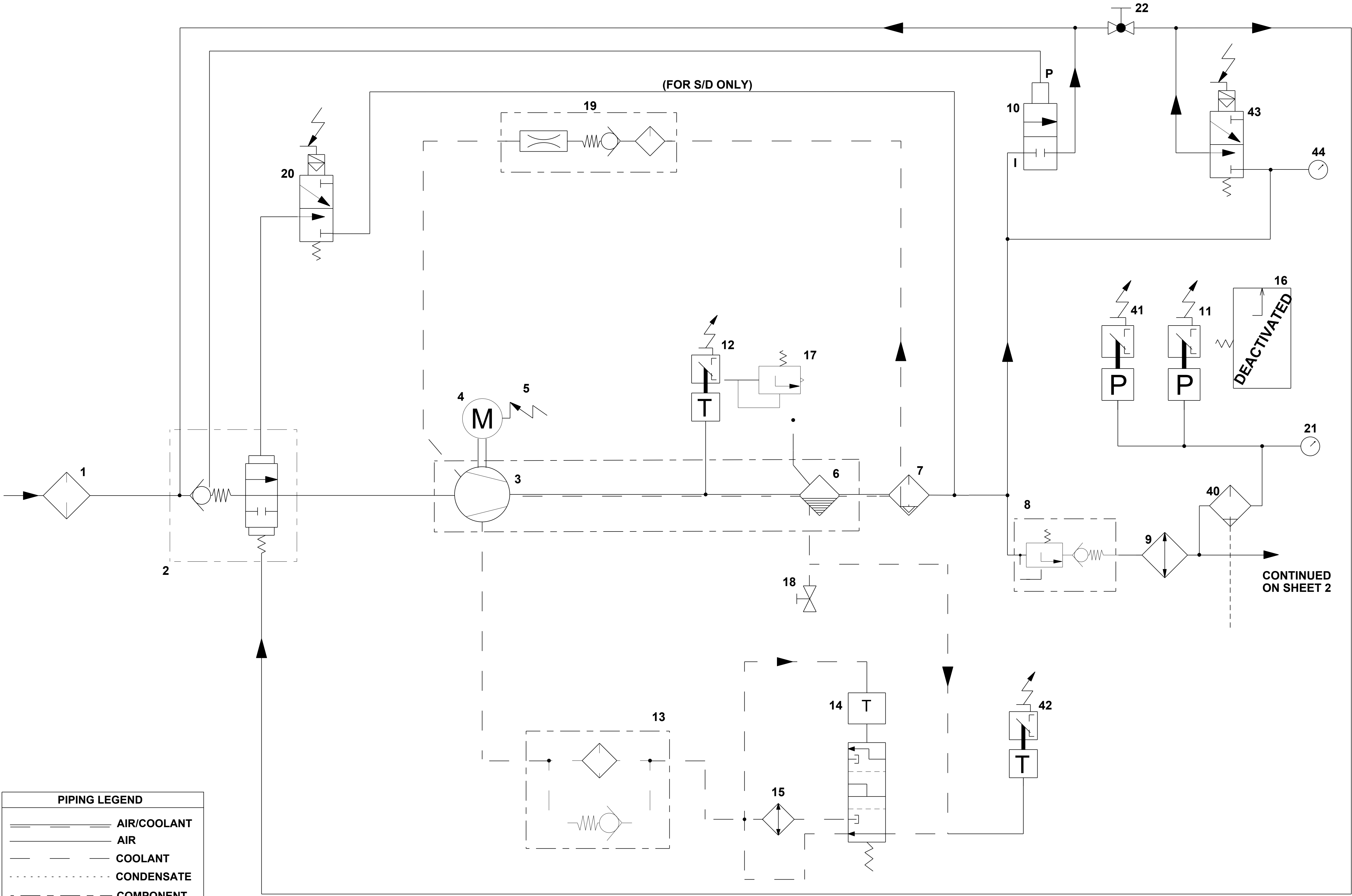


NOTES :

1. FOR CUSTOMER CONNECTION SIZES AND LOCATIONS SEE FOUNDATION PLAN OF UNIT.

2. COMPONENTS INSIDE DOUBLE LINES ARE OPTION MODULE.

REVISIONS					
ZONE	REV	ECN	DESCRIPTION	DATE	APP'D
	A	76795	ORIGINAL RELEASE	2007NOV02	R. Redmon
	B	77395	ROTATED VALVE 22 90° ADDED SUMP PRESSURE GAUGE 44 21 GAUGE, DISCHARGE PRESSURE WAS GAUGE, PRESSURE REDESIGN BLOWDOWN VALVE 10 ADDED FLOW DIRECTION ARROWS	2008AUG19	W.Sorah
2,C6	C	81962	DEFINED DRYER "BYPASS "OPTION)".	2013JUL29	OWANESIAN



PIPING LEGEND	
	AIR/COOLANT
	AIR
	COOLANT
	CONDENSATE
	COMPONENT BOUNDARY
	REFRIGERANT

44	GAUGE, SUMP PRESSURE
43	VALVE, SOLENOID
42	SWITCH, TEMPERATURE
41	SWITCH, PRESSURE
40	FILTER
39	RECEIVER, AIR
38	VALVE, AUTO DRAIN
37	COMPRESSOR, REFRIGERANT
36	VALVE, HOT GAS BYPASS
35	CONDENSER
34	FILTER DRIER, REFRIGERANT
33	TUBE, CAPILLARY
32	VALVE, CONDENSATE
31	INDICATOR, DEW POINT
30	EVAPORATOR
29	VALVE, CHECK
28	MOISTURE SEPARATOR
27	VALVE, ISOLATION (OPTION)
26	RECUPERATOR
25	VALVE, CHECK
24	FILTER, HIGH EFFICIENCY AIR
23	FILTER, GENERAL PURPOSE AIR
22	VALVE, BALL
21	GAUGE, DISCHARGE PRESSURE
20	VALVE, SOLENOID
19	SCREEN, SCAVENGE
18	VALVE, DRAIN
17	VALVE, SAFETY
16	VALVE, PILOT
15	COOLER, OIL
14	THERMOSTAT
13	FILTER, COOLANT
12	SWITCH, TEMPERATURE
11	SWITCH, PRESSURE
10	VALVE, BLOWDOWN
9	AFTERCOOLER
8	VALVE, MINIMUM PRESSURE
7	TANK, SEPARATOR - FINE
6	TANK, SEPARATOR - COARSE
5	RELAY, MOTOR OVERLOAD
4	MOTOR
3	AIR END ASSEMBLY
2	VALVE, AIR INLET
1	FILTER, AIR
DIAGRAM POSITION	DESCRIPTION
KEY TO COMPONENT	

WARNING: THE EXPORT OR REEXPORT OF THIS DRAWING OR A PRODUCT PRODUCED BY THIS DRAWING IS SUBJECT TO U.S. EXPORT ADMINISTRATION REGULATIONS AND OTHER APPLICABLE GOVERNMENT RESTRICTIONS OR REGULATIONS.

PROPRIETARY NOTICE

THIS DRAWING CONTAINS CONFIDENTIAL AND TRADE SECRET INFORMATION. IS THE PROPERTY OF INGERSOLL-RAND CO., AND IS GIVEN TO THE RECEIVER IN CONFIDENCE. THE RECEIVER BY RECEPTION AND RETENTION OF THE DRAWING ACCEPTS THE DRAWING IN CONFIDENCE AND AGREES THAT, EXCEPT AS AUTHORIZED IN WRITING BY INGERSOLL-RAND CO. IT WILL (1) NOT USE THE DRAWING OR ANY COPY THEREOF OR THE CONFIDENTIAL OR TRADE SECRET INFORMATION THEREIN; (2) NOT COPY THE DRAWINGS; (3) NOT DISCLOSE TO OTHERS EITHER THE DRAWING OR THE CONFIDENTIAL OR TRADE SECRET INFORMATION THEREIN; AND (4) UPON COMPLETION OF THE NEED TO RETAIN THE DRAWING, OR UPON DEMAND, RETURN THE DRAWING, ALL COPIES THEREOF, AND ALL MATERIAL COPIED THEREFROM.

DO NOT SCALE DRAWING

DRAWING CONFORMS TO ASME Y14.5M - 1994

CAD GENERATED DRAWING. NO MANUAL REVISIONS ALLOWED

UNLESS OTHERWISE SPECIFIED:
- REMOVE ALL BURRS AND SHARP CORNERS
- WELD SYMBOLS TO BE IN ACCORDANCE WITH ANSI/AWS A2.4

COPYRIGHT © 2013
Ingersoll Rand
ALL RIGHTS RESERVED

THIRD ANGLE PROJECTION

DRAWN	DATE
R. Redmond	2007NOV02
CHECKED	DATE
T.VINCENT	2007NOV02
APPROVED	DATE
P.SCARPINATO	2007NOV02

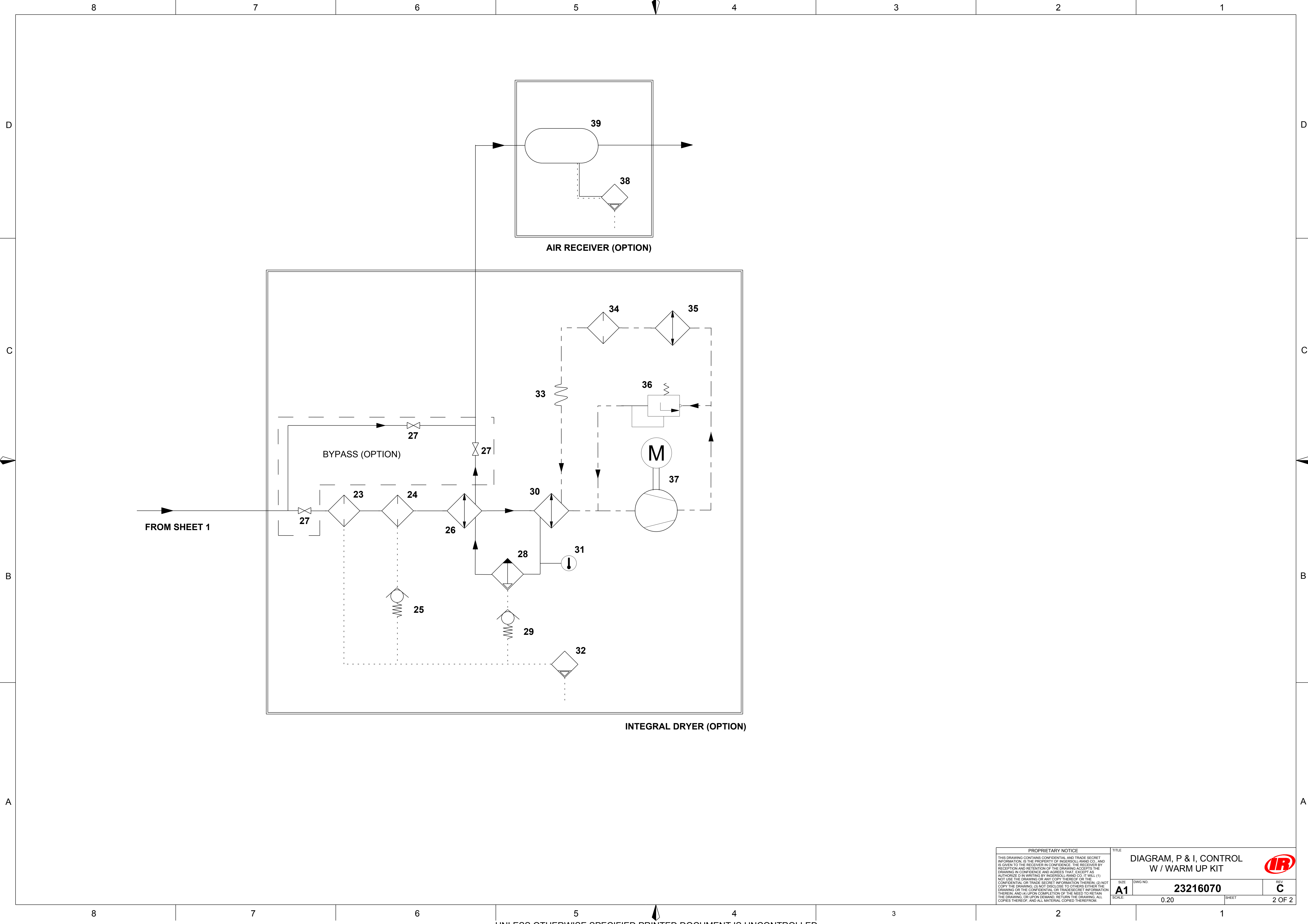
DRAWING TYPE
Detail Drawing
NOMENCLATURE

TITLE

DIAGRAM, P & I, CONTROL W / WARM UP KIT

SIZE	ESTIMATED WEIGHT (KG UNLESS OTHERWISE SPECIFIED)	DWG NO.	REV
A1	0.0 kilogram	23216070	C

SCALE: 0.20 UNIT: UP-SERIES 5-15HP SHEET 1 OF 2



PROPRIETARY NOTICE		TITLE	
THIS DRAWING CONTAINS CONFIDENTIAL AND TRADE SECRET INFORMATION. IS THE PROPERTY OF INGERSOLL-RAND CO. AND IS GIVEN TO THE RECEIVER IN CONFIDENCE. THE RECEIVER BY RECEIPT AND RETENTION OF THE DRAWING ACCEPTS THE DRAWING IN CONFIDENCE AND AGREES THAT, EXCEPT AS AUTHORIZED IN WRITING BY INGERSOLL-RAND CO. IT WILL (1) NOT USE THE DRAWING OR ANY COPY THEREOF OR THE CONFIDENTIAL OR TRADE SECRET INFORMATION THEREIN; (2) NOT COPY THE DRAWING; (3) NOT DISCLOSE TO OTHERS EITHER THE DRAWING OR THE CONFIDENTIAL OR TRADE SECRET INFORMATION THEREIN; AND (4) UPON COMPLETION OF THE NEED TO RETAIN THE DRAWING OR UPON DEMAND, RETURN THE DRAWING, ALL COPIES THEREOF, AND ALL MATERIAL COPIED THEREFROM.		DIAGRAM, P & I, CONTROL W / WARM UP KIT	
SIZE	DWG NO.	REV	
A1	23216070	C	
SCALE:	0.20	SHEET	2 OF 2