



## Instructions and Parts List

### Vibration Isolator Kit (46821641)

### For Mounting of Kohler CH440 and Honda GX390 Engine driven Receiver mounted packages

#### PARTS LIST

ITEM	CCN	DESCRIPTION	QTY
1	32308652	Isolator, Vibration	4
2	*95861282	Screw, Hex ½-13X3-1/2"	4
3	95937371	Washer, Flat ½"	12
4	95923397	Nut, Self-Lock ½"-13	4
5	32310104	Spacer, Isolator	4
6	23666860	Washer, D-Shape	4
7	23666878	Washer, Fender	4

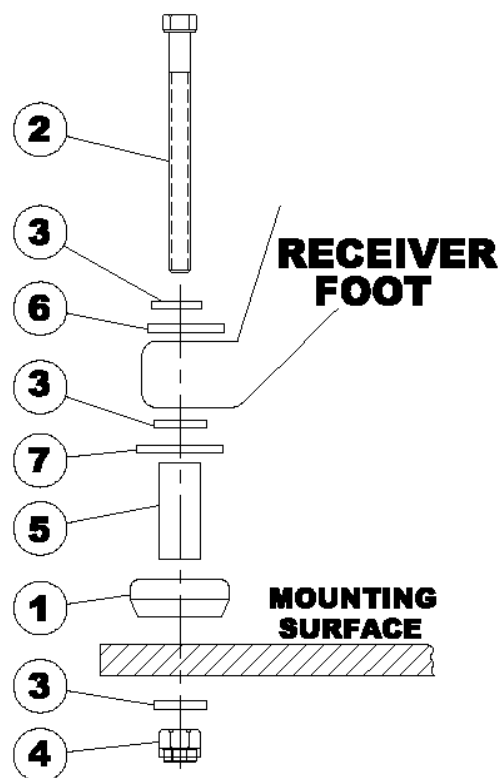


#### CAUTION

Failure to properly install the vibration kit can result in damage to the compressor/tank assembly.

#### NOTICE

To ensure proper mounting of the compressor package to mounting surface and to avoid possible safety hazards, it is essential that this unit be installed with the vibration isolator kit provided.



#### INSTRUCTIONS

1. Prior to initial start-up, the compressor unit must first be properly mounted on a rigid mounting surface with the vibration isolator kit provided. Refer to the Figure 1 for truck bed mounting. Note: For mounting to concrete floors use ½" concrete anchors (not supplied) in place of \*1/2" x 3 1/2" hex screw. Refer to Quick Start Manual for more information..
2. To install, assemble parts in the position and sequence shown in the illustration.  
Torque all nuts to 55 ft. lb. (72 Nm).

**Figure 1. Truck Bed Mounting of Vibration Isolator Kit Assembly**