

Instructions & Parts List

Mounting Hardware Kit – Part Number 46822243

NOTICE

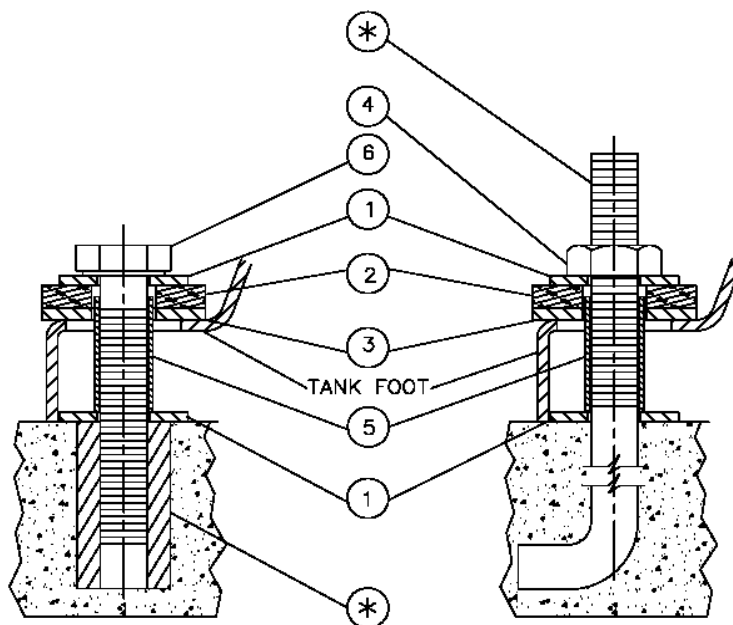
To ensure proper mounting of the compressor package to the mounting surface and to avoid possible safety hazards, it is essential that this unit be installed with the mounting hardware provided.

CAUTION

Failure to properly install the mounting hardware kit can result in damage to the compressor/tank assembly and may void warranty.

Prior to initial start-up, the compressor unit must first be properly mounted on a rigid mounting surface with the mounting hardware kit provided. Refer to the illustration below.

To install, assemble parts in the position and sequence shown and securely tighten all hardware (items 4 or 6) in the illustration.



ITEM	PART NUMBER	DESCRIPTION	QTY
1	32135204	WASHER, FLAT – 1/2 IN	6
2	23715147	WASHER, NEOPRENE	3
3	95317194	WASHER, 5/8IN STD GALV. FOR 5/8 BOLT	3
4	95423695	NUT – HEX 1/2 IN	3
5	46822375	SLEEVE, STEEL TUBE	3
6	95993663	BOLT, WASHER FACED HEX HEAD	3
*	Not Supplied		