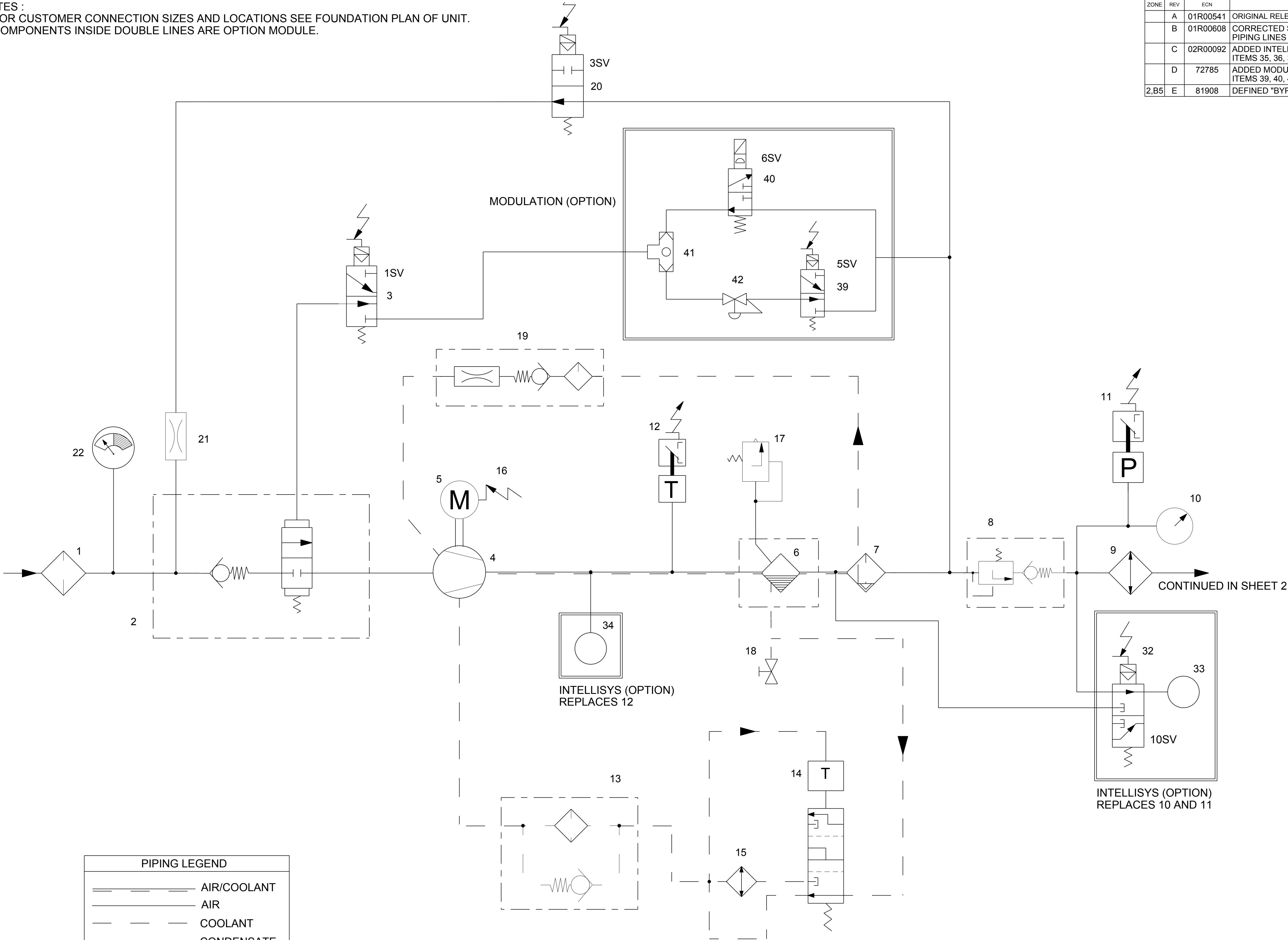


NOTES :  
1. FOR CUSTOMER CONNECTION SIZES AND LOCATIONS SEE FOUNDATION PLAN OF UNIT.  
2. COMPONENTS INSIDE DOUBLE LINES ARE OPTION MODULE.

REVISIONS					
ZONE	REV	ECN	DESCRIPTION	DATE	DWN
	A	01R00541	ORIGINAL RELEASE	9-20-01	ARB
	B	01R00608	CORRECTED SYMBOL NUMBER 14, REDREW PIPING LINES FOR ITEMS 14 & 15.	11-2-01	JWH
	C	02R00092	ADDED INTELLISYS OPTION, ADDED ITEMS 35, 36, 37, AND 38	02-20-02	GGM
	D	72785	ADDED MODULATION OPTION, ADDED ITEMS 39, 40, 41, AND 42	7-26-05	JLJ
2,B5	E	81908	DEFINED "BYPASS OPTION".	2013JUN12	OWANESIAN
					C.H.FRAZIER



42	VALVE, MODULATION
41	VALVE, SHUTTLE
40	VALVE, SOLENOID 6SV (MODULATION)
39	VALVE, SOLENOID 5SV (MODULATION)
38	VALVE, ISOLATION
37	3 WAY VALVE, BYPASS
36	FILTER, AIR
35	MOISTURE SEPARATOR
34	SENSOR, TEMPERATURE
33	TRANSDUCER, PRESSURE
32	VALVE, SOLENOID 10SV (LINE/SUMP)
31	AUTO DRAIN VALVE
30	RECEIVER, AIR
29	CONDENSATE DRAIN VALVE
28	INDICATOR, DEW POINT
27	EXPANSION VALVE
26	FILTER, REFRIGERANT
25	CONDENSER
24	EVAPORATOR
23	REFRIGERANT COMPRESSOR
22	INDICATOR, AIR FILTER RESTRICTION
21	ORIFICE
20	VALVE, SOLENOID 3SV (BLOWDOWN)
19	SCREEN, SCAVENGE
18	VALVE, DRAIN
17	VALVE, SAFETY
16	RELAY, MOTOR OVERLOAD
15	COOLER, OIL
14	THERMOSTAT
13	FILTER, COOLANT
12	SWITCH, TEMPERATURE
11	SWITCH, PRESSURE
10	GAUGE, PRESSURE
9	AFTERCOOLER
8	VALVE, MINIMUM PRESSURE
7	TANK, SEPARATOR - FINE
6	TANK, SEPARATOR - COARSE
5	MOTOR
4	AIR END ASSEMBLY
3	VALVE, SOLENOID 1SV (LOAD)
2	VALVE, AIR INLET
1	FILTER, AIR
DIAGRAM POSITION	DESCRIPTION
	KEY TO COMPONENT

PIPING LEGEND	
	AIR/COOLANT
	AIR
	COOLANT
	CONDENSATE
	COMPONENT BOUNDARY
	REFRIGERANT

WARNING: THE EXPORT OR REEXPORT OF THIS DRAWING OR A PRODUCT PRODUCED BY THIS DRAWING IS SUBJECT TO U.S. EXPORT ADMINISTRATION REGULATIONS AND OTHER APPLICABLE GOVERNMENT RESTRICTIONS OR REGULATIONS.

PROPRIETARY NOTICE

THIS DRAWING CONTAINS CONFIDENTIAL AND TRADE SECRET INFORMATION. IS THE PROPERTY OF INGERSOLL-RAND CO., AND IS GIVEN TO THE RECEIVER IN CONFIDENCE. THE RECEIVER BY RECEPTION AND RETENTION OF THE DRAWING ACCEPTS THE DRAWING IN CONFIDENCE AND AGREES THAT, EXCEPT AS AUTHORIZED IN WRITING BY INGERSOLL-RAND CO. IT WILL (1) NOT USE THE DRAWING OR ANY COPY THEREOF OR THE CONFIDENTIAL OR TRADE SECRET INFORMATION THEREIN; (2) NOT COPY THE DRAWING; (3) NOT DISCLOSE TO OTHERS EITHER THE DRAWING OR THE CONFIDENTIAL OR TRADE SECRET INFORMATION THEREIN; AND (4) UPON COMPLETION OF THE NEED TO RETAIN THE DRAWING, OR UPON DEMAND, RETURN THE DRAWING, ALL COPIES THEREOF, AND ALL MATERIAL COPIED THEREFROM.

DO NOT SCALE DRAWING

DRAWING CONFORMS TO ASME Y14.5M - 1994

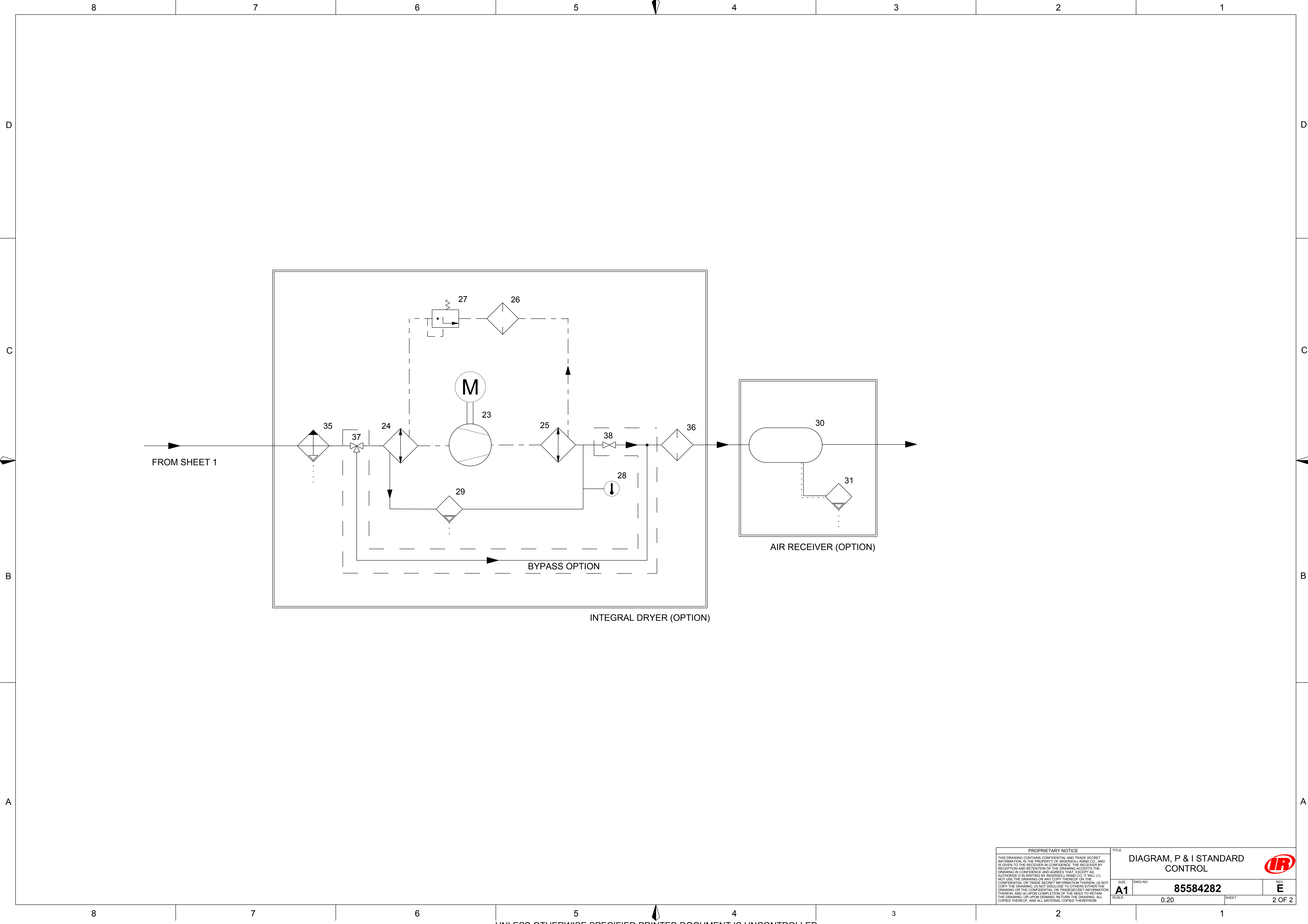
CAD GENERATED DRAWING. NO MANUAL REVISIONS ALLOWED

UNLESS OTHERWISE SPECIFIED:  
- REMOVE ALL BURRS AND SHARP CORNERS  
- WELD SYMBOLS TO BE IN ACCORDANCE WITH ANSI/AWS A2.4

COPYRIGHT @ 2013  
Ingersoll Rand  
ALL RIGHTS RESERVED

THIRD ANGLE PROJECTION	
DRAWN	DATE
AJAY	2001SEP20
CHECKED	DATE
J.HUNT	2001SEP20
APPROVED	DATE
A.BURRIS	2001SEP20
DRAWING TYPE	
Detail Drawing	
NOMENCLATURE	

TITLE		
DIAGRAM, P & I STANDARD CONTROL		
SIZE	ESTIMATED WEIGHT (KG UNLESS OTHERWISE SPECIFIED)	DWG NO.
A1	0.0 kilogram	85584282
SCALE:	0.20	UNIT: PEGASUS
SHEET		1 OF 2



PROPRIETARY NOTICE		TITLE	
<small>THIS DRAWING CONTAINS CONFIDENTIAL AND TRADE SECRET INFORMATION. IS THE PROPERTY OF INGERSOLL-RAND CO. AND IS GIVEN TO THE RECEIVER IN CONFIDENCE. THE RECEIVER BY RECEIPT AND RETENTION OF THE DRAWING ACCEPTS THE DRAWING IN CONFIDENCE AND AGREES THAT, EXCEPT AS AUTHORIZED IN WRITING BY INGERSOLL-RAND CO. IT WILL (1) NOT USE THE DRAWING OR ANY COPY THEREOF OR THE CONFIDENTIAL OR TRADE SECRET INFORMATION THEREIN; (2) NOT COPY THE DRAWING; (3) NOT DISCLOSE TO OTHERS EITHER THE DRAWING OR THE CONFIDENTIAL OR TRADE SECRET INFORMATION THEREIN; AND (4) UPON COMPLETION OF THE NEED TO RETAIN THE DRAWING OR, UPON DEMAND, RETURN THE DRAWING, ALL COPIES THEREOF, AND ALL MATERIAL COPIED THEREFROM.</small>		DIAGRAM, P & I STANDARD CONTROL	
		SIZE	DWG NO.
		A1	85584282
		SCALE:	0.20
SHEET		REV	
2 OF 2		E	

