

4

3

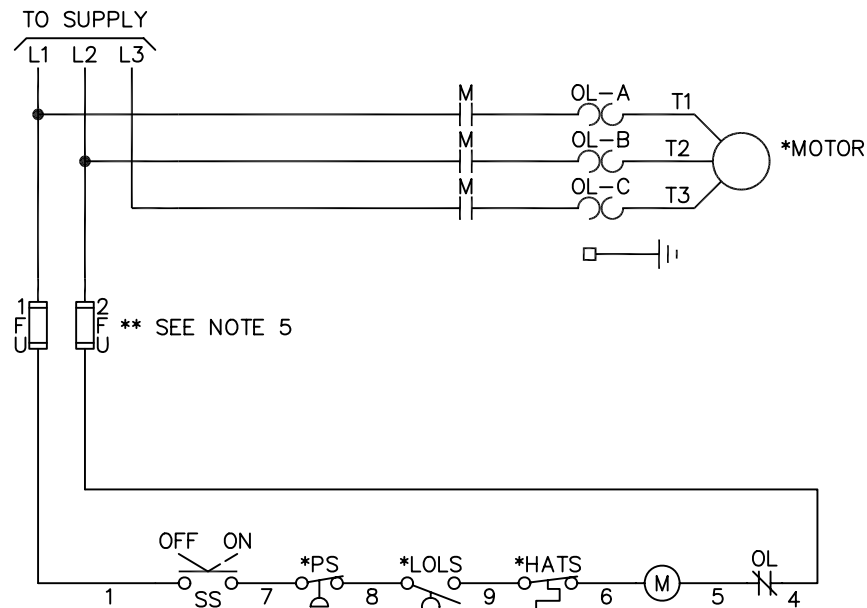
2

1

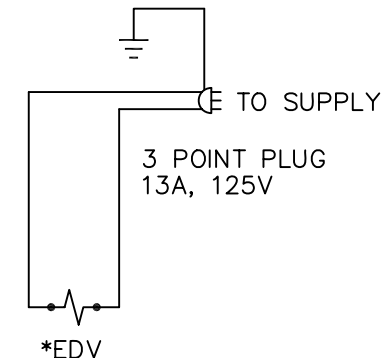
19987H
ON SMO

LEGEND

- * EDV - VALVE, ELECTRIC DRAIN 120/1/50-60
- FU - FUSE, CONTROL CIRCUIT (NOTE 5)
- * HATS- SWITCH, HI AIR TEMPERATURE (WITH RESET)
- * LOLS - SWITCH, LOW OIL LEVEL
- M - COIL, MOTOR STARTER
- OL - OVERLOAD, MOTOR STARTER
- * PS - SWITCH, PRESSURE (OR VACUUM)
- SS - SWITCH, SELECTOR - ON/OFF

O
N
T.O.CONTROL PANEL
OPTIONS

1



1. *FURNISHED, MOUNTED & WIRED OUTSIDE OF CONTROL PANEL, IF REQUIRED BY ORDER.
2. CIRCUIT SHOWN IN NORMAL POSITION DE-ENERGIZED.
3. ALL WIRING TO BE IN ACCORDANCE WITH NEC.
4. ALL WIRING TO BE MARKED IN ACCORDANCE WITH THIS SCHEMATIC.

NOTES

5. ** ON STARTERS, WHICH DO NOT INCLUDE CONTROL CIRCUIT FUSES, THE BRANCH CIRCUIT PROTECTION DEVICE PROVIDED BY THE CUSTOMER SHOULD NOT EXCEED 45 AMP, IN ACCORDANCE WITH NATIONAL ELECTRIC CODE.

PROPRIETARY NOTICE

THIS DOCUMENT CONTAINS CONFIDENTIAL AND TRADE SECRET INFORMATION, IS THE PROPERTY OF INGERSOLL-RAND COMPANY, AND IS LOANED TO THE RECEIVER IN CONFIDENCE. THE RECEIVER BY RECEIPT AND RETENTION OF THE DOCUMENT ACCEPTS THE DOCUMENT IN CONFIDENCE AND AGREES THAT, EXCEPT AS AUTHORIZED IN WRITING BY INGERSOLL-RAND COMPANY, IT WILL:

- (1) NOT USE THE DOCUMENT OR ANY COPY THEREOF OR THE CONFIDENTIAL OR TRADE SECRET INFORMATION THEREIN;
- (2) NOT COPY THE DOCUMENT;
- (3) NOT DISCLOSE TO OTHERS EITHER THE DOCUMENT OR THE CONFIDENTIAL OR TRADE SECRET INFORMATION THEREIN; AND
- (4) UPON COMPLETION OF THE NEED TO RETAIN THE DOCUMENT, OR UPON DEMAND, RETURN THE DOCUMENT, ALL COPIES THEREOF, AND ALL MATERIAL COPIED THEREFROM.

Copyright © 1982
Ingersoll-Rand Company
All Rights Reserved

WARNING: The export or reexport of this drawing or a product produced by this drawing is subject to U.S. Export Administration Regulations and other applicable governmental restrictions or regulations.



THIRD ANGLE PROJECTION

SCALE

N/A

DATE

2-16-88

DRAWN

D. ADAMS

CHECKED

JS

DSN. APP

JM, LQ

ENGR. APP

RDR/ckc

INGERSOLL-RAND Co.

RECIPROCATING COMPRESSOR DIVISION
SMALL COMPRESSOR BUSINESS UNIT
CAMPBELLVILLE, KY

REF. DUTY RATED STARTER

TITLE SCHEMATIC-ELECTRICAL

SIZE

C

DWG NO.

H48661

REV

04

SHEET 1 OF 1

4

3

2

1