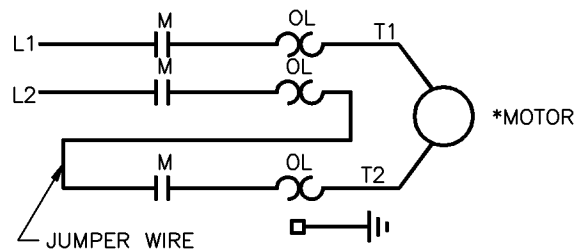
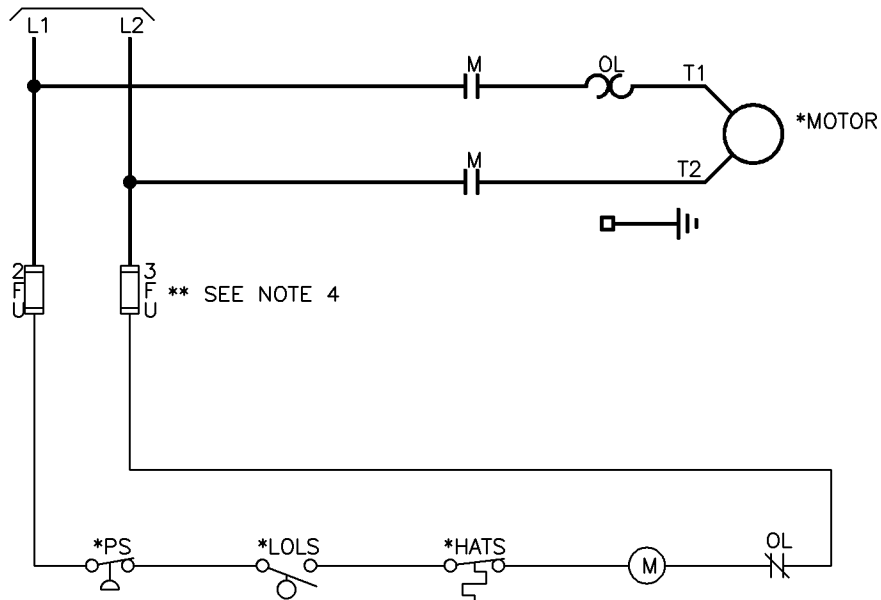


H48722

DWG NO.

TO SUPPLY



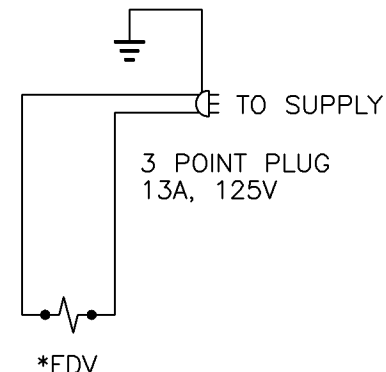
ALTERNATE WIRING SCHEMATIC FOR  
CONVERSION OF 3 PHASE STARTER  
TO 1 PHASE APPLICATION.

## LEGEND

- \* EDV - VALVE, ELECTRIC DRAIN 120/1/50-60
- FU - FUSE, CONTROL CIRCUIT (NOTE 4)
- \* HATS - SWITCH, HI AIR TEMPERATURE (WITH RESET)
- \* LOLS - SWITCH, LOW OIL LEVEL
- M - COIL, MOTOR STARTER
- OL - OVERLOAD, MOTOR STARTER
- \* PS - SWITCH, PRESSURE (OR VACUUM)

O.P.O.  
T.O.CONTROL PANEL  
OPTIONS

1



## NOTES

1. (\*) FURNISHED, MOUNTED & WIRED OUTSIDE OF CONTROL PANEL, IF REQUIRED BY ORDER.
2. CIRCUIT SHOWN IN NORMAL POSITION DE-ENERGIZED.
3. ALL WIRING TO BE IN ACCORDANCE WITH NEC.
4. \*\* ON STARTERS, WHICH DO NOT INCLUDE CONTROL CIRCUIT FUSES, THE BRANCH CIRCUIT PROTECTION DEVICE PROVIDED BY THE CUSTOMER SHOULD NOT EXCEED 45 AMP, IN ACCORDANCE WITH NATIONAL ELECTRIC CODE

## PROPRIETARY NOTICE

THIS DOCUMENT CONTAINS CONFIDENTIAL AND TRADE SECRET INFORMATION, IS THE PROPERTY OF INGERSOLL-RAND COMPANY, AND IS LOANED TO THE RECIPIENT IN CONFIDENCE. THE RECIPIENT BY RECEIVING AND RETURNING OF THIS DOCUMENT ACCEPTS THE DOCUMENT IN CONFIDENCE AND AGREES THAT, EXCEPT AS AUTHORIZED IN WRITING BY INGERSOLL-RAND COMPANY, IT WILL (1) NOT USE THE DOCUMENT OR ANY COPY THEREOF OR THE CONFIDENTIAL OR TRADE SECRET INFORMATION THEREIN; (2) NOT COPY THE DOCUMENT; (3) NOT DISCLOSE TO OTHERS EITHER THE DOCUMENT OR THE CONFIDENTIAL OR TRADE SECRET INFORMATION THEREIN; AND (4) UPON COMPLETION OF THE NEED TO RETURN THE DOCUMENT, OR UPON DEMAND, RETURN THE DOCUMENT, ALL COPIES THEREOF, AND ALL MATERIAL COPIED THEREFROM.

Copyright © 1996  
Ingersoll-Rand Company  
All Rights Reserved

WARNING: The export or receipt of this drawing or a product produced by this drawing is subject to U.S. Export Administration Regulations and other applicable governmental restrictions or regulations.



THIRD ANGLE PROJECTION

SCALE

NONE

DATE

2/17/93

DRAWN

G.D.LEVI

CHECKED

JS

DSN. APP

JM, LQ

ENGR. APP

RDR/cck

INGERSOLL-RAND Co.

RECIPROCATING COMPRESSOR DIVISION

SMALL COMPRESSOR BUSINESS UNIT

CAMPBELLVILLE, KY

REF. 5/7.5 H.P. 230/1/60

TITLE

SCHEMATIC-ELECTRICAL

SIZE

C

DWG NO.

H48722

REV

02

SHEET 1 OF 1